



What if negative emission technologies fail at scale? Implications of the Paris Agreement for big emitting nations

Alice Larkin, Jaise Kuriakose, Maria Sharmina & Kevin Anderson

To cite this article: Alice Larkin, Jaise Kuriakose, Maria Sharmina & Kevin Anderson (2018) What if negative emission technologies fail at scale? Implications of the Paris Agreement for big emitting nations, *Climate Policy*, 18:6, 690-714, DOI: [10.1080/14693062.2017.1346498](https://doi.org/10.1080/14693062.2017.1346498)

To link to this article: <https://doi.org/10.1080/14693062.2017.1346498>



© 2017 The Author(s). Published by Informa UK Limited, trading as Taylor & Francis Group



[View supplementary material](#)



Published online: 03 Aug 2017.



[Submit your article to this journal](#)



Article views: 6377



[View related articles](#)



[View Crossmark data](#)



Citing articles: 12 [View citing articles](#)

RESEARCH ARTICLE



What if negative emission technologies fail at scale? Implications of the Paris Agreement for big emitting nations

Alice Larkin ^{a,b}, Jaise Kuriakose ^{a,b}, Maria Sharmina ^{a,b} and Kevin Anderson^c

^aTyndall Centre for Climate Change Research, University of Manchester, Manchester, UK; ^bSchool of Mechanical Aerospace and Civil Engineering, University of Manchester, Manchester, UK; ^cZennström Professor, Centre for Environment and Development Studies (CEMUS), Uppsala University and Swedish University of Agricultural Sciences, Uppsala, Sweden

ABSTRACT

A cumulative emissions approach is increasingly used to inform mitigation policy. However, there are different interpretations of what '2°C' implies. Here it is argued that cost-optimization models, commonly used to inform policy, typically underplay the urgency of 2°C mitigation. The alignment within many scenarios of optimistic assumptions on negative emissions technologies (NETs), with implausibly early peak emission dates and incremental short-term mitigation, delivers outcomes commensurate with 2°C commitments. In contrast, considering equity and socio-technical barriers to change, suggests a more challenging short-term agenda. To understand these different interpretations, short-term CO₂ trends of the largest CO₂ emitters, are assessed in relation to a constrained CO₂ budget, coupled with a 'what if' assumption that negative emissions technologies fail at scale. The outcomes raise profound questions around high-level framings of mitigation policy. The article concludes that applying even weak equity criteria, challenges the feasibility of maintaining a 50% chance of avoiding 2°C without urgent mitigation efforts in the short-term. This highlights a need for greater engagement with: (1) the equity dimension of the Paris Agreement, (2) the sensitivity of constrained carbon budgets to short-term trends and (3) the climate risks for society posed by an almost ubiquitous inclusion of NETs within 2°C scenarios.

POLICY RELEVANCE

Since the Paris meeting, there is increased awareness that most policy 'solutions' commensurate with 2°C include widespread deployment of negative emissions technologies (NETs). Yet much less is understood about that option's feasibility, compared with near-term efforts to curb energy demand. Moreover, the many different ways in which key information is synthesized for policy makers, clouds the ability of policy makers to make informed decisions. This article presents an alternative approach to consider what the Paris Agreement implies, if NETs are unable to deliver more carbon sinks than sources. It illustrates the scale of the climate challenge for policy makers, particularly if the Agreement's aim to address 'equity' is accounted for. Here it is argued that much more attention needs to be paid to what CO₂ reductions can be achieved in the short-term, rather than taking a risk that could render the Paris Agreement's policy goals unachievable.


ARTICLE HISTORY

Received 21 September 2016
Accepted 19 June 2017

KEYWORDS

Big emitters; carbon budgets; CO₂; emission pathways; emission scenarios; short-term trends

CONTACT Jaise Kuriakose  jaise.kuriakose@manchester.ac.uk  Tyndall Centre for Climate Change Research & School of Mechanical Aerospace and Civil Engineering, University of Manchester, Oxford Road, Manchester M13 9PL, UK

 Supplemental data for this article can be accessed [10.1080/14693062.2017.1346498](https://doi.org/10.1080/14693062.2017.1346498)

© 2017 The Author(s). Published by Informa UK Limited, trading as Taylor & Francis Group

This is an Open Access article distributed under the terms of the Creative Commons Attribution License (<http://creativecommons.org/licenses/by/4.0/>), which permits unrestricted use, distribution, and reproduction in any medium, provided the original work is properly cited.

Introduction

When establishing measures to mitigate greenhouse gas emissions at national and even sub-national scales in line with the Paris Agreement, policy makers are informed, either directly or indirectly, by CO₂ pathways derived from academic research. It is therefore essential that such pathways evolve from a diverse range of inputs and relationships as well as capture differing national circumstances. Yet what is clearly evident is that the analyses informing national energy decision making are dominated by a significant reliance on the large-scale and global implementation of negative emissions technologies (NETs). In theory, such technologies effectively increase the available carbon budget and thereby reduce the rates of actual mitigation of CO₂ emissions necessary to deliver on the commitment under the Paris Agreement to limit warming to ‘well below’ 2°C. Certainly such NET-based scenarios should be considered as a theoretical possibility. However, and as a complement to the wealth of scenarios with NETs, this article eschews their widespread deployment as technically too speculative, uncertain in terms of efficacy and feedbacks, and with critical issues on the scale and scope of available biomass inadequately understood (Gough & Vaughan, 2015; Mann, 2009). Building on Anderson and Bows (2011), this analysis explores the implications of near-term CO₂ trajectories of the biggest emitters for delivering on the 2°C commitment. Using a cumulative emissions framing, the article highlights how the existing literature typically underrepresents socio-technical opportunities for near-term mitigation, and in so doing significantly elevates the risk of potentially irreversible damage to the climate system.

Cumulative emissions and climate sensitivity dictate future temperatures (Allen et al., 2009). Both are important for communicating implications of climate science to decision makers. ‘Cumulative emissions’ refers to the stock of GHG emissions that can be released into the atmosphere over time, for a given probability of a change in global mean surface temperature, while climate sensitivity is the temperature change associated with doubling atmospheric CO₂ concentration compared with pre-industrial levels. The *transient climate response* is the temperature rise above pre-industrial levels induced when CO₂ concentration doubles following a 1% increase in concentration each year. The *equilibrium climate sensitivity* describes the stabilized temperature at equilibrium, following a sustained long-term doubling of CO₂ concentration. Uncertainty in either leads to uncertainty in the cumulative emissions associated with future temperatures. The likely (>66% probability) range for the transient climate response is 1.0°C to 2.5°C (IPCC, 2013) and 1.5°C to 4.5°C for the equilibrium climate sensitivity, although some studies challenge these ranges (Hansen et al., 2013; Sherwood, Bony, & Dufresne, 2014). It is feasible that temperature changes could be higher, although current consensus is that the empirically measured temperature response makes such changes less likely (Otto et al., 2013).

The *transient climate response to cumulative carbon emissions* (TCRE) is the global mean surface temperature change for every 3670 GtCO₂ (1000 GtC)¹ emitted, and provides a preferential measure of the warming response to CO₂ when radiative forcing varies over decadal timescales (Millar, Allen, Rogelj, & Friedlingstein, 2016). Its likely range is 0.8°C to 2.5°C (pp. 17; IPCC, 2013) and important in determining cumulative budgets associated with 2°C. However, even within the Intergovernmental Panel on Climate Change (IPCC)’s Fifth Assessment Report (AR5), including ‘summaries for policy makers’ (SPM), there remains substantial room for misunderstanding. Table A1 draws attention to the assorted means by which emissions associated with temperature change are communicated, a point made by Rogelj, Schaeffer, et al. (2016). A variety of units, timeframes and probabilities are used throughout AR5 to present a 2°C carbon budget. There are differences in how probabilities of exceeding 2°C are presented: qualitatively (likely, etc.), approximate ranges (>50%, etc.) and precise ranges, and units (e.g. GtC, PgC) vary within and across reports, and different budgets for the same probabilities of staying below 2°C. This variety partly arises from some results being generated by CMIP5 ESM (Coupled Model Inter-comparison Project Phase 5, Earth System Models) ensemble using four Representative Concentration Pathways, with others generated by Integrated Assessment Models (IAMs) using several hundreds of scenarios. Clarity is further hindered by the treatment of non-CO₂ forcings. Such a minefield of potentially confusing information obstructs informed critique by policy makers of the mitigation scenarios forthcoming from the community, and therefore of the scope, scale and deployment rates of energy supply and demand socio-technical options.

Given the implications of exceeding 2°C, there is a responsibility on academics to adhere to scientific evidence and provide clarity for decision makers. Yet when scrutinizing the solution space presented, it can be argued that the community not only offers confusing information, but subjectively chooses to give greater

credence to some options – such as extensive deployment of NETs – over others. The aim of this article is two-fold. Firstly, to complement existing IAM-based outputs commonly informing decision makers, to illustrate the implications of a broader solution space. Secondly, to use this space to illustrate to policy makers, especially within big emitting nations, that overlooking now the full range of mitigation options available, poses a real risk of creating greater lasting damage to the climate system, that may become too late to remedy.

Methods

Applying a carbon budget framing highlights the importance of delivering high (>4% p.a.) mitigation rates and curbing emissions within a plausibly short timeframe (Anderson & Bows, 2011; Rogelj et al., 2010). By contrast, 2° C IAM scenarios typically output global mitigation rates of 2–4% p.a., sometimes made possible by global emissions peaking in 2010 and routinely before 2020 (Anderson, 2015; UNEP, 2014). Moreover, for all scenarios in the IPCC database with a >50% chance of avoiding 2°C, and ‘policy delay’ to 2020, ‘negative emissions’ through technologies such as bioenergy with carbon capture and storage (BECCS) are assumed to play a critical role (Anderson, 2015; Gough & Vaughan, 2015; Rogelj et al., 2011; UNEP, 2014; van Vuuren et al., 2011). While some IAM studies draw attention to the importance for avoiding 2°C of long-term technological availability (van Vliet et al., 2014), cost-optimal frameworks point to the alternatives as being simply an issue of technology, cost and potential. They fail to sufficiently address social aspects of technology change (Ackerman, DeCanio, Howarth, & Sheeran, 2009), an issue of deep importance when considering social acceptability in futures with extensive BECCS deployment (Braun, Merk, Pönitzsch, Rehman, & Schmidt, 2017; Fuss et al., 2014; Gough & Vaughan, 2015). Although technical efficiency plays a role in IAMs, they are ill-equipped or ill-designed to deliver solutions with substantial socio-economic/demand-side change. Specifically, their economic foundations are mostly based on traditional equilibrium models that cannot capture the complexity of social systems and emergent behavioural patterns (Pahl-Wostl et al., 2013). Thus, current IAM outputs risk delivering overly optimistic, unrealistic and potentially flawed messages about future change (Moss, Pahl-Wostl, & Downing, 2001). This is problematic given their dominance in the literature, underpinning a common view that challenging, but incremental energy policy is sufficient to deliver on the Paris Agreement.

Grouping ‘big emitters’

With over 80% of global CO₂ emissions from energy and industry emitted by 25 nations, the largest CO₂ contributors – ‘big emitters’, are clustered by energy and macro-economic characteristics. Each group’s energy and development context is considered, enabling assessment of the sensitivity of decarbonization rates to short-term inertia and lock-in. Although some analyses recognize the importance of approaches grounded in a practical understanding of social, technical and economic factors (for instance, Deetman, Hof, & van Vuuren, 2015), here significant attention is paid to near-term (typically ~5 year) trends. The results present a complementary perspective to the existing literature.

To derive big emitter groups, territorial and consumption-based CO₂ emission inventories were scrutinized to rank nations (Le Quéré et al., 2014). Under both consumption and territorial accounts, the big emitter countries are the same, and contribute over 80% of global emissions (and 65% of the population). They are:

Australia, Brazil, Canada, China, France, Germany, India, Indonesia, Iran, Italy, Japan, Kazakhstan, Mexico, Poland, Russia, Saudi Arabia, South Africa, South Korea, Spain, Taiwan, Thailand, Turkey, UK, Ukraine and US.

To build a contextual understanding of these nations, absolute and relative characteristics of energy systems including levels and rates of gross domestic product (GDP)/per capita, CO₂ intensity of energy consumption etc., were compared. These Kaya-type indicators reflect social, economic and environmental aspects of sustainability allowing countries and groups of countries to be assessed in terms of energy system demand- and supply-side characteristics, contextualizing trends in annual CO₂ emissions. Normalizing the indicators for 2000, 2010 and 2012 and absolute CO₂ trends over five year intervals from 1990, the 25 nations² were ranked, then expert judgement³ used to group countries based on if they (a) express similar⁴ characteristics, and (b) do not alone exceed >4% of the global budget⁵ (Figure 1). The groups are:

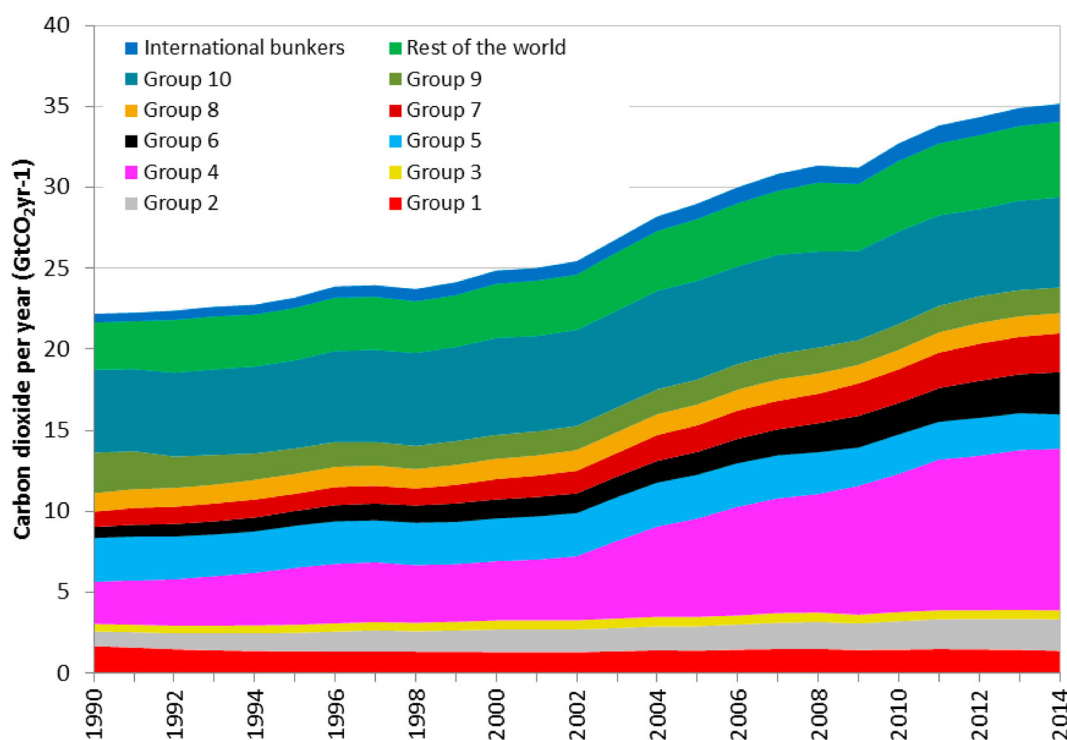


Figure 1. Group annual CO₂ emissions from 1990 to 2014 (equivalent consumption-based figures shown in [Appendix Figure A1](#)). Group 1: Australia, Poland, South Africa, Ukraine. Group 2: Brazil, Mexico, South Korea, Turkey. Group 3: Canada. Group 4: China, Hong Kong, Taiwan. Group 5: France, Germany, Italy, Spain, UK; Group 6: India. Group 7: Indonesia, Iran, Kazakhstan, Saudi Arabia, Thailand. Group 8: Japan. Group 9: Russia. Group 10: US.]

- Australia, Poland, South Africa, Ukraine (Group 1)
- Brazil, Mexico, South Korea, Turkey (Group 2)
- Canada (Group 3)
- China, Hong Kong, Taiwan (Group 4)
- France, Germany, Italy, Spain, UK (Group 5)
- India (Group 6)
- Indonesia, Iran, Kazakhstan, Saudi Arabia, Thailand (Group 7)
- Japan (Group 8)
- Russia (Group 9)
- US (Group 10)

Fuel use from international aviation and shipping ('bunkers') is unaccounted for within national budgets. With over 3% of global CO₂ in 2014 (some sources suggest 5%, with ~3% from shipping (Smith et al., 2015)), a share anticipated to grow (Bows-Larkin, 2015), here they are classed as a big emitter. For completeness, all other nations are within a Rest of the World 'RoW' group.

Figure 2 illustrates that CO₂ from China, India, Group 2, Group 7 and 'bunkers' have grown most rapidly since 1990, while Russia's emissions fell dramatically before 1997 growing slowly since. The Western European Group 5, and also Group 1 (heavy coal users) have lower CO₂ emissions in 2014 than in 1990; though consumption emissions were rising prior to the global economic downturn (Figure A2). The US, Canada and Japan have higher CO₂ emissions in 2014 than 1990, although emissions were relatively stable in recent years. As is evident from Figure 1, China, has ~ 30% share of global CO₂ emissions in 2014 (territorial accounting, 25% for consumption based), and its short-term CO₂ growth rate critically influences global CO₂ emissions. Similarly, with ~18% share of emissions (and per capita consumption emissions almost three times that of China),

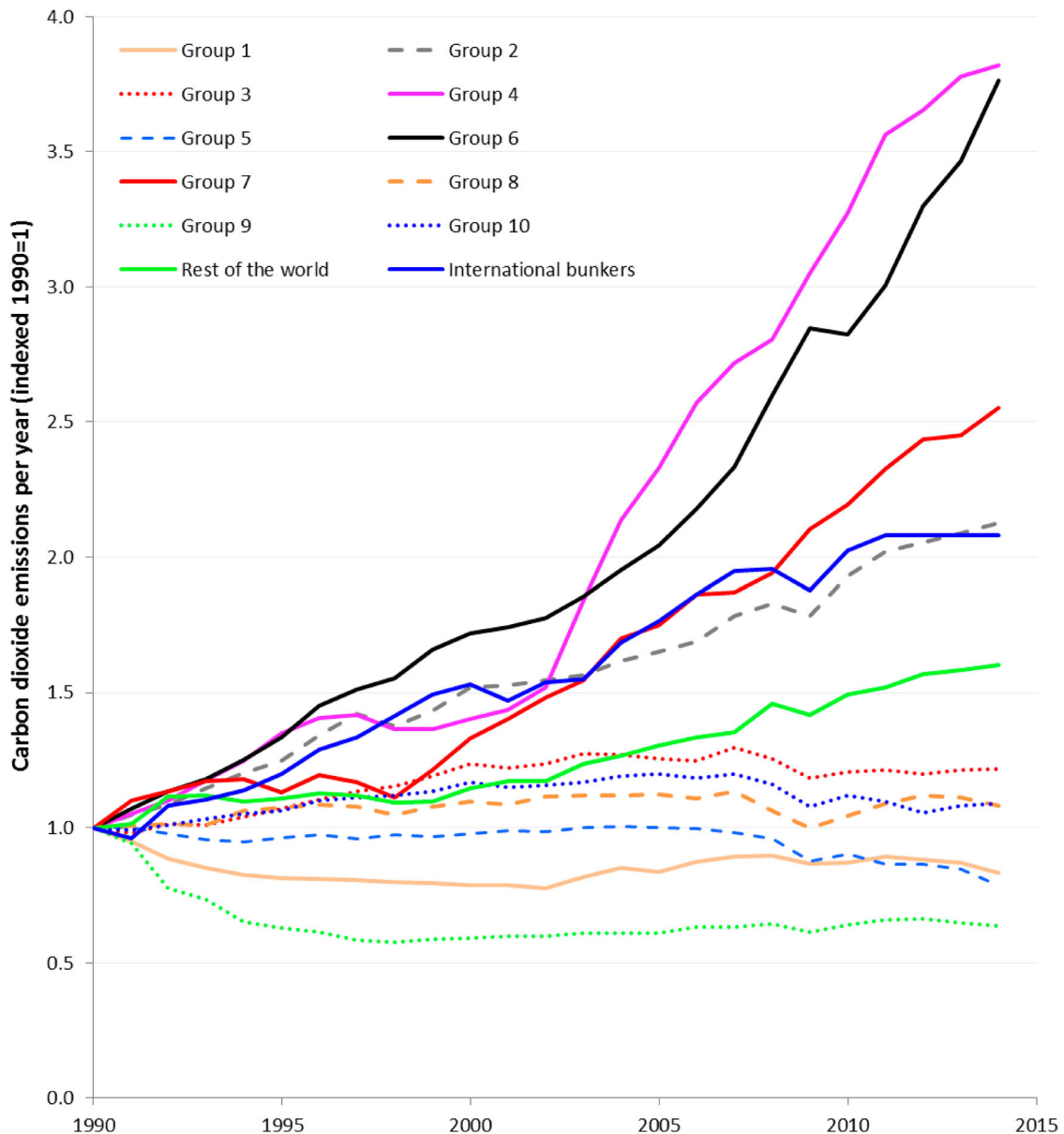


Figure 2. CO₂ emissions from the high emitting groups, bunkers plus RoW, normalized to 1990=1 (consumption-based equivalent in [Appendix Figure A2](#)). [Group 1: Australia, Poland, South Africa, Ukraine. Group 2: Brazil, Mexico, South Korea, Turkey. Group 3: Canada. Group 4: China, Hong Kong, Taiwan. Group 5: France, Germany, Italy, Spain, UK; Group 6: India. Group 7: Indonesia, Iran, Kazakhstan, Saudi Arabia, Thailand. Group 8: Japan. Group 9: Russia. Group 10: US.]

emissions from the US strongly influence global CO₂. To explore the implications of current trends, Nationally Determined Contributions (NDCs) submitted by countries in accordance with the Paris Agreement, and issues of energy system lock-in, ‘what if?’ emission pathways are developed, commensurate with avoiding 2°C.

Developing scenario pathways

The 2°C framing of climate change has emerged as a scientifically informed, but ultimately political ‘anchor point’ (Jordan et al., 2013) associated with carbon budgets. This was reinforced by the Paris Agreement, with

the additional qualifier of ‘well below 2°C’, arguably implying a probability of a greater than 50% chance. The emission pathways developed here are premised on budgets constrained by a 50% or 66% probability of avoiding 2°C.

While deforestation emissions are subject to large uncertainties (Houghton et al., 2012; Jain, Meiyappan, Song, & House, 2013; Le Quéré et al., 2015; Saatchi et al., 2011) it is important to estimate twenty-first century cumulative deforestation emissions to determine the remaining CO₂ budget. Here, assumptions around deforestation use historical data from temperate and tropical regions based on the Woods Hole Research Centre (WHRC) book keeping method (Houghton et al., 2012) as the most robust source to 2010 at the time of analysis. Cumulative emissions for deforestation from 1850–2013 are estimated as 571 GtCO₂. Land-use change emissions have remained relatively constant at around 1.3 ± 0.5 GtC/yr during 1960–2015, although Federici, Tubiello, Salvatore, Jacobs, and Schmidhuber (2015) suggest there were some decreases during 2011–2015. Here an optimistic assumption is assumed of an on-going 2–3% per year reduction, resulting in a budget for 2000–2100 of 150 GtCO₂.

CO₂-only budgets used are from the AR5 Synthesis SPM (IPCC, 2014b). Acknowledging debate over greenhouse gas emissions associated with agriculture and non-CO₂ forcers (Bows-Larkin et al., 2014; Calvin et al., 2013; Kyle, Müller, Calvin, & Thomson, 2014; Rogelj, Meinshausen, Schaeffer, Knutti, & Riahi, 2015), the figures used are: >50% of 2°C, 3000 GtCO₂⁶; >66% 2900 GtCO₂,⁷ updating similar analysis (Anderson & Bows, 2011; Anderson, Bows, & Mander, 2008; Bows, Mander, Starkey, Bleda, & Anderson, 2006). Emissions between the 1860–80 mean and 2014 (Le Quéré et al., 2015), along with those from deforestation (Houghton et al., 2012), are removed to leave a CO₂-only budget *for energy and industry* from 2015 to 2100: >50%, 898 GtCO₂; >66%, 798 GtCO₂, consistent with Rogelj, Schaeffer, et al. (2016). While a next step could allocate shares of the budget to each big emitter, as in Raupach et al. (2014), here the focus is on developing pathways using each group’s short-term CO₂ trend, and subsequently ‘backcasting’ reduction rates to remain within budget. Recognizing the range of burden-sharing frameworks (Höhne, den Elzen, & Escalante, 2014; IPCC, 2014a; Raupach et al., 2014) a very constrained carbon budget raises the question of whether a formal burden-sharing regime for 2°C remains viable (Sharmina, Bows-Larkin, & Anderson, 2015). This study takes a pragmatic approach, contextualizing short-term trends within the global budget available.

Analysis

Three families of scenarios are designed to illustrate the sensitivity of a constrained carbon budget to short-term emission trends of big emitters, when annual CO₂ emissions remain above zero. Consequently, none of the scenarios assume explicit inclusion of NETs to contrast with the majority of 2°C scenarios in the literature.⁸ The ‘Sustain’ pathway family represents a highly inequitable world successfully recovering from the economic downturn, with limited efforts to implement new mitigation policy prior to 2020. Quantitatively, groups sustain post-recession (2009–2014) rates to 2020, decreasing by 1 percentage point p.a. until reaching a peak in emissions (e.g. a 2% rate in 2020 reduces to 1% in the following year, and peaks the year after). Post-peak, the mitigation rate increases year-on-year to the maximum necessary to remain within budget. These pathways are similar to the ‘Policy Start in 2020’, Table 1 of Fuss et al., 2016. The ‘Immediate’ family illustrates another highly inequitable world where the economic downturn resumes and more positive mitigation effort materializes prior to 2020 (closer to Fuss et al., 2016’s Table 1 ‘Policy Start in 2010’). Quantitatively it is similar to the ‘Sustain’ family, but with only one year post-recession rate sustained for all groups unless specified (Table 1). The ‘Development’ scenario aims to capture a more equitable distribution of mitigation effort, where nations with low per-capita emissions expand fossil energy systems for an extended period. Quantitatively, Groups 6, 7 and RoW maintain post-recession growth rates, reaching a peak in 2030. China’s emissions grow at 2% p.a. peaking by 2025. Other groups continue with post-recession rates for one year. All groups have post-peak mitigation rates rising by one percentage point p.a. to remain within the 50% budget. Figure 3 illustrates *Sustain* (50%) and *Immediate* (50%). Other scenarios are illustrated in the Appendix.

Table 1. Scenario names and sustained mitigation rates for the scenario pathways.

| Name (probability of exceeding 2°C) | Maximum sustained annual mitigation rate for groups (%) |
|-------------------------------------|---|
| Sustain (66%) | 14.0 |
| Sustain (50%) | 8.5 |
| Immediate (66%) | 6.0 |
| Immediate (50%) | 5.0 |
| Immediate-China-Sustain (66%) | 7.5 |
| Immediate-China-Sustain (50%) | 6.0 |
| Immediate-China-2% (66%) | 6.5 |
| Immediate-China-2% (50%) | 5.0 |
| Development | 11.0 |

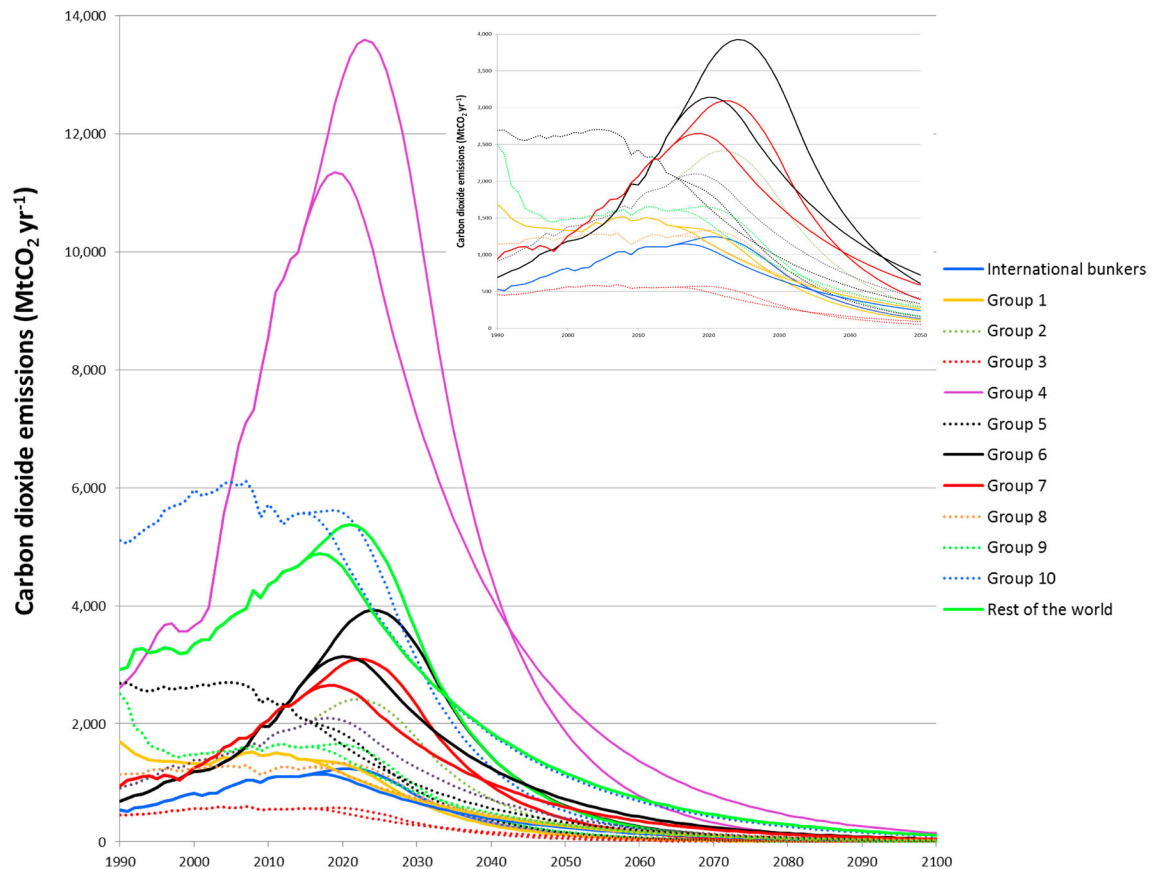


Figure 3. CO₂ from energy and industry under the Sustain (50%) (later peaks for same colour) and Immediate (50%) (early peaks for same colour) scenarios, sustaining either 5-year and 1-year post-economic downturn growth rates respectively. Rates of mitigation are in line with a 50% chance of avoiding 2°C. Inset shows all Groups other than RoW, China and US at a higher resolution. [Group 1: Australia, Poland, South Africa, Ukraine. Group 2: Brazil, Mexico, South Korea, Turkey. Group 3: Canada. Group 4: China, Hong Kong, Taiwan. Group 5: France, Germany, Italy, Spain, UK; Group 6: India. Group 7: Indonesia, Iran, Kazakhstan, Saudi Arabia, Thailand. Group 8: Japan. Group 9: Russia. Group 10: US.]

The scenarios differ by the date when all groups on aggregate start to mitigate. Any group already on a downward trajectory (e.g. Group 5) will continue at that reduction rate for either one (*Immediate*) or five years (*Sustain*) with the rate increasing post-2020. Any group exhibiting a near-term trend of CO₂ growth will start to reduce this growth rate either after one (*Immediate*), or five years (*Sustain*). The difference between the *Immediate* and *Sustain* families demonstrate that for every year's delay in extending or initiating mitigation

effort, there is an increase in the maximum reduction rate required across groups of around 1% p.a. for the 50% budget and nearer 1.5% for the 66% budget. Table 1 in Fuss et al. (2016) suggests no clear signal within IAMs that a delay in policy requires a greater extent of BECCS. Here, with no scope for CO₂ emissions falling below zero later in the century, any delay in policy implementation has a direct impact on the rate of decarbonization necessary in later years.

Immediate-China-Sustain (50%) contrasts a scenario where China's emissions continue to grow at post-recession rates to 2019 with a scenario (*Immediate-China-2% (50%)*) where CO₂ growth reduces to 2% from 2015 to 2019, reducing further thereafter (Figure A3). Comparing this with the scenarios where all groups curb growth rates immediately (e.g. *Immediate (50%)* in Figure 3), illustrates that if mitigation could happen five years sooner in China, or the rate of growth reduced to 2% on average from 2015 onwards, other groups could reduce their sustained reduction rates by 1% to 1.5% per annum under the most constrained budget. A similar analysis can be conducted for the US with its estimated 16% share of global CO₂ emissions in 2015, but the recent low CO₂ growth rate (0.2% from 2009 to 2014) means that mitigation rates for other countries are less sensitive to US pathways than they are to China's.

The *Development* pathways make explicit an allowance for increasing emissions from industrializing nations, while other groups have peaked emissions by 2018. In *Development*, even when constrained by a 50% budget, India, for instance, still needs to decarbonize its energy system such that per capita emissions remain below 4 tonnes of CO₂ per person when emissions peak (compared with the US at 17 tonnes per person, Figure A4).

Even in the *Development* scenario (*Development*, Figure A5), the distribution of cumulative emissions is disproportionately weighted towards wealthier and rapidly industrializing nations. India's 2050 emissions are below 0.6 tCO₂ per person, demonstrating a need to take a much lower-carbon development route than taken by industrialized nations (Lamb & Rao, 2015). All pathways explicitly require industrializing nations to 'leapfrog' carbon intensive development.

Discussion

All scenario pathways illustrated have sustained CO₂ reductions that exceed the 4% p.a. rate typical of 2°C scenarios in the literature, but consistent with budget-focused analysis of Raupach et al. (2014) and Peters, Andrew, Solomon, and Friedlingstein (2015). This divergence arises from three principal factors.

First, all IAM scenarios within the IPCC scenario database for a >50% chance of avoiding 2°C and with a policy delay to 2020, expand the available budget through the large-scale uptake of NETs, specifically BECCS (Gough & Vaughan, 2015). As Peters (2016) notes, in the absence of CCS 'there needs to be a radical reduction in the consumption of fossil fuels for a likely chance to keep global average temperatures below 2°C'. While BECCS may yet prove effective *at scale*, for reasons highlighted below, this is judged as too speculative an assumption to include, providing an important complement to dominant literature.

The scale and rate of assumed BECCS deployment is typically high in 2°C scenarios, providing the equivalent of up to one third of current global electricity demand by 2040, rising to 50% by 2050.⁹ The absence of robust operating costs for a CCS power station, let alone BECCS, also raises concerns given that it is repeatedly found to be a key least-cost policy option in many scenarios.

Second, the potential for socio-technical and socio-economic change to deliver reductions in energy consumption in the near term is something IAMs are ill-equipped to model given their conventional economic frameworks, assumptions and failure to reflect the path-dependent nature of technical change (Ackerman et al., 2009; Pahl-Wostl et al., 2013; Stern, 2016). Third, the inertia constraining the rate of transition to low-carbon energy supply is characterized here by focusing on the dynamics of short-term trends, postulating a mix of both challenging but deliverable, and theoretical changes to these trends.

The essential characteristics of the scenarios draw particular attention to the importance of existing levels of CO₂, and near-term CO₂ growth rates. The groups whose recent emissions rates differ by more than 1% compared with historical rates (Table 2) are Japan and Russia. In Japan's case, emissions are expected to rise at a higher rate than pre-2011, if it continues to move away from nuclear (Crastan, 2014;

Table 2. Comparison between growth/decline rates across groups. Low growth or a reduction: G1, G3, G5, G10; low–medium growth: G8, G9, RoW; medium growth: G2, Bunkers; medium–high growth: G4, G6 and G7.

| | G1 | G2 | G3 | G4 | G5 | G6 | G7 | G8 | G9 | G10 | RoW | Bunkers | World |
|---|--|---|--|---|--|--|--|---|--------------------------|------------------------|--|--|----------------|
| | Australia Poland South Africa Ukraine | Brazil Mexico South Korea Turkey | Canada | China | France Germany Italy Spain UK | India | Indonesia Iran Kazakhstan Saudi Arabia Thailand | Japan | Russia | US | | | |
| Annual rates of energy & industry CO ₂ change | 1990–2014 2000–2014 2009–2014 | –1% 0% –1% | 3% 2% 4% | 1% 0% 1% | 6% 7% 5% | –1% –2% –2% | 6% 6% 6% | 4% 5% 4% | 0% 0% 2% | –2% 1% 1% | 0% 0% 0% | 2% 2% 2% | 3% 2% 2% |
| Pledges, NDCs or Kyoto targets as of 2016 interpreted for fossil fuel & industry (UNEP, 2014, Climate Action Tracker 2015) [for a range, the average is used] | Australia: 23–48% above 1990 by 2020; ±5% above 1990 by 2030 Poland: as G5 101% above 1990 by 2020; 20–82% by 2025–2030 Ukraine: 22% below 1990 by 2020, 41% by 2030 | Brazil: 60–76% above 1990 by 2020; 116% by 2030 Mexico: 22%–36% below a baseline as defined by the NDC by 2030 (assume recent growth of 1.3% pa to 2020) South Korea: 84% above 1990 by 2020; 81% by 2030 Turkey: 389% above 1990 by 2030 [continue trend to 2020 at 3.4%] | 7% above 1990 by 2020; 30% cut from 2005 by 2030 | Intensity target of 60–65% below 2005 by 2030. Intention to peak by 2030. | 20–30% below 1990 by 2020; 40% below by 2030 | Intensity targets of 20–25% below 2005 by 2020; 33–35% below by 2030 | Indonesia: 330% above 1990 by 2020; 450–540% relative to 1990 by 2030. Iran: 4% below BAU by 2030 Kazakhstan: 19% below 1990 by 2020; 10% by 2030 Saudi Arabia: 600% increase on 1990 levels by 2030 Thailand: 20% below BAU by 2030 | +5.2% above 1990 levels by 2020; 15% below 1990 by 2030 | 6–11% below 1990 by 2030 | 17% below 1990 by 2025 | Assumes recent growth to 2020 then reduced to a peak in 2030 | Intensity targets for shipping and potential trading scheme for aviation | |
| CO ₂ change p.a. 2014–2020 | 5% | –2% | –2% | 1% | –1% | 6% | 1% | 0% | 4% | –2% | 2% | 2% | 2% |
| CO ₂ change p.a. 2020–2030 | –3% | 1% | –2% | 0% | –2% | 0% | 4% | –2% | 1% | –2% | 1% | 0% | 0% |

Huang & Nagasaka, 2012). For Russia, falling oil prices linked to increased production from OPEC and Russia, rising consumption of indigenous shale oil in the US influencing trade, and a highly volatile Russian economy (Connolly, 2015; Korppoo & Kokorin, 2017; Russell, 2015) all add to uncertainty around Russia's CO₂ trends.

How China's shifting economy impacts on CO₂ growth is a key source of uncertainty. With nearly 30% of global CO₂ from fossil fuel and industry, any short-term change in China's CO₂ growth rate has a significant impact on mitigation rates required by all. Recent developments, such as China's reduction in coal consumption, have already influenced global CO₂ growth (Qi, Stern, Wu, Lu, & Green, 2016). A critical issue, is the possibility that data for China for 2000 to 2013 may have underestimated cumulative emissions by nearly 11 GtCO₂ (Liu et al., 2015) and that Chinese energy statistics are frequently found to contain large anomalies (Korsbakken, Peters, & Andrew, 2016). Moreover, many IAMs fail to capture near-term issues adequately, as they often involve ten-year time-steps and use modelled, rather than empirical, 2010-to-present data.

India's recent growth rate continued at the 1990 to 2014 average despite the global economic downturn. Its emissions grew by 6% between 2013 and 2014 and 5% 2014–2015, dominating the marginal increase in global emissions. With rising demand for fossil fuels, and India's very low per-capita CO₂, its growth rates might not be expected to fall for at least a decade. India's recent Environment Minister suggested emissions will not peak before 2045, given the need to focus on poverty eradication (Davenport, 2014). This view is buttressed by India's NDC where, even by the start of the NDC period, emissions are estimated at 30% higher than in 2013. In a similar vein, the International Energy Agency concludes that there are few signs of any disconnect between India's energy demand growth and CO₂ emissions out to 2030 (International Energy Agency, 2015).

While not a 'country group', international aviation and shipping (bunkers) are assumed to undertake urgent and rapid decarbonization. This is in contrast to expectations and their exclusion from the Paris Agreement. Stakeholders representing aviation and shipping generally assume that their industries will become net purchasers of emissions rights from others (Bows-Larkin, 2015). This position was reinforced by an International Civil Aviation Organisation agreement to implement its Carbon Offsetting and Reduction Scheme for International Aviation (CORSIA) to 'address any annual increase in total CO₂ from international civil aviation' (ICAO, 2016). The analysis here shows that, as a big emitter, emissions from bunker fuels are highly influential. Consequently, there is a clear imperative for this sector to urgently deliver absolute mitigation.

Virtually all nations submitted NDCs for the 2015 Paris Conference of the Parties (COP) 21 meeting. These NDCs, alongside broader energy contexts, are built on (Table 2) to form an NDC-based scenario, constructed for comparison. Using NDCs, other national pledges, targets under the 1997 Kyoto Protocol or the 2009 Copenhagen Accord, or, where none exist, a scenario building on a continuation of post-downturn trend, Table 2 shows emissions mitigation rates for each group for 2014 to 2030. Post-2030, all groups are assumed to accelerate mitigation by one percentage point p.a. to a maximum of 6% (Figure 4). The cumulative budget of this scenario is around 1450 GtCO₂ from 2014–2100 for energy and industry only, breaching both the 66% and 50% budgets for staying below 2°C.¹⁰

Considering the pathways generated here, what stands out is that even a weak consideration of equity¹¹ (i.e. the *Development* scenario), leaves the 66% chance of avoiding 2°C as arguably infeasible.¹² A similar conclusion can be drawn for the 50% probability of avoiding 2°C, given 11% p.a. reductions would require unprecedented whole-system change. If no allowance is made for equity, the 66% chance of avoiding 2°C is only achievable with a program of deep and immediate mitigation. The Paris Agreement makes no provision for significant pre-2020 efforts. If post-recession emission rates for each country-group continue until 2020, remaining within the 50% budget is practicable, but only with global mitigation rates by 2025 well beyond the aggregated NDCs submitted to the Paris COP. Put simply, failure of the international community to deliver immediate (pre-2020), deep and absolute mitigation from the big emitters, will effectively put the carbon budgets for 'well below' 2°C (or 'likely' 66–100%, chance) beyond reach, unless NETs are both proved viable at scale and urgently deployed.

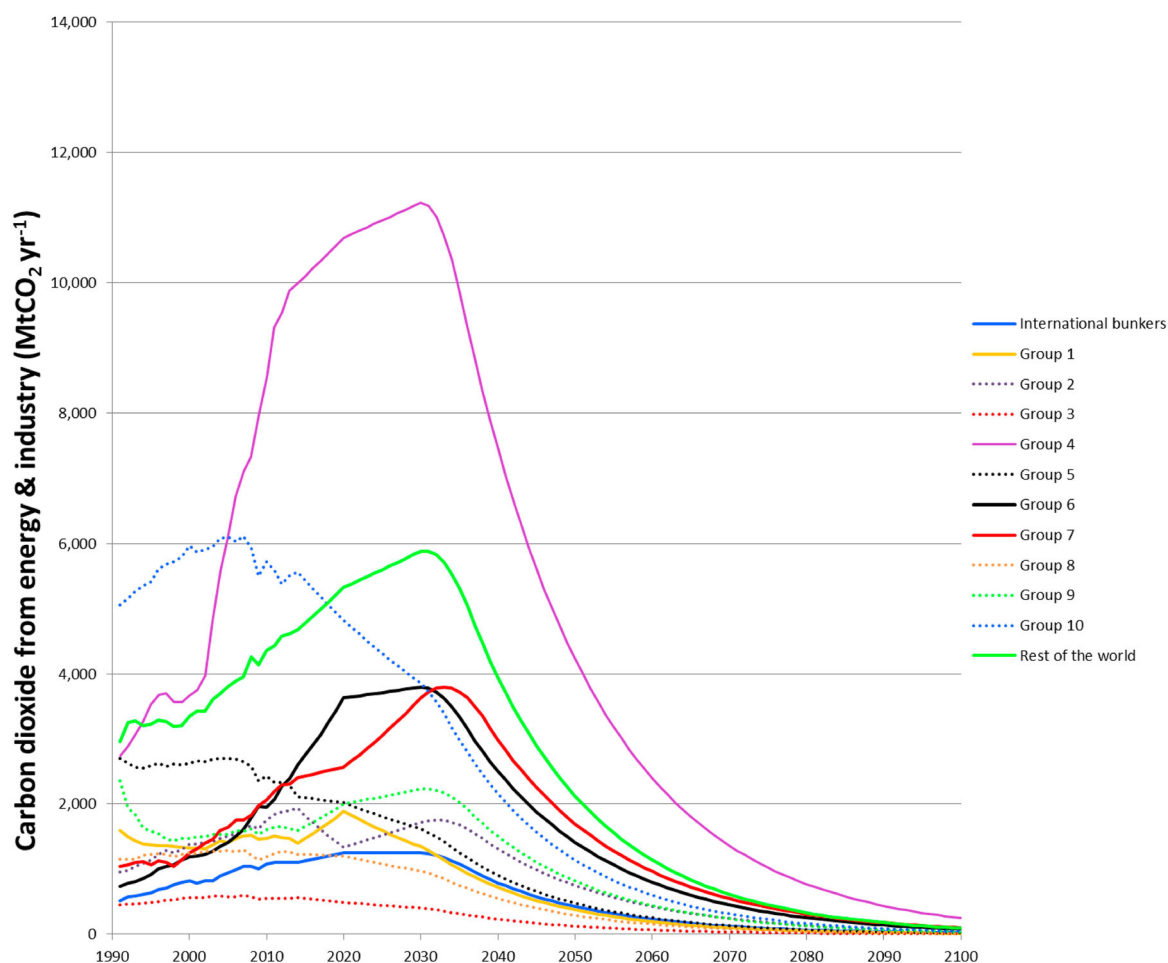


Figure 4. CO₂ from energy and industry pathways for the groups under the NDC scenario where rates are as in Table 2, reducing rapidly from 2030. [Group 1: Australia, Poland, South Africa, Ukraine. Group 2: Brazil, Mexico, South Korea, Turkey. Group 3: Canada. Group 4: China, Hong Kong, Taiwan. Group 5: France, Germany, Italy, Spain, UK; Group 6: India. Group 7: Indonesia, Iran, Kazakhstan, Saudi Arabia, Thailand. Group 8: Japan. Group 9: Russia. Group 10: US.]

Conclusions

This article analyses recent emission trends of big emitting nations, and of the aviation and shipping sectors, and considers these in relation to energy system characteristics, technical, social and political inertia, and issues of development. The analysis explicitly eschews widespread use of NETs, both because there are many major and potentially insurmountable obstacles to their successful uptake *at scale* (Brack, 2017; Fuss et al., 2016; International Energy Agency, 2016; Smith & Torn, 2013; Vaughan & Gough, 2016), and to provide a complement to the wealth of scenarios that do include them.

Bringing together this analysis with the IPCC's carbon budgets leads to challenging and uncomfortable conclusions. First, the on-going failure of any 'big emitter' to begin a comprehensive and rapid transition of its energy systems, suggests that constraining emissions to a carbon budget with a greater than 66% chance of avoiding 2°C, if applying even weak equity criteria, is now infeasible (with the NETs caveat as outlined). A similar conclusion arises for the 50% budget (and again assuming that NETs fails at scale). In essence, there exists a conflict within the Paris Agreement between its temperature and equity commitments.

While big emitting nations and international aviation and shipping are pivotal to delivering early and global-scale mitigation, overlooking how emissions may rise as other nations necessarily improve their

standards of well-being would be a mistake. It is clear that rapidly industrializing nations need to leapfrog the high-carbon infrastructures of their industrialized counterparts, and establish low-carbon alternatives from the outset.

In 2016, global CO₂ emissions were ~60% higher than they were at the time of the IPCC's first report in 1990. Despite a quarter of a century of repeated scientific evidence, there has been limited success in delivering meaningful levels of absolute mitigation. Against this backdrop, and with the successful adoption of the Paris Agreement, it is essential that the academic community captures the breadth of opportunities for constraining emissions within carbon budgets associated with '*well below 2°C*' and, ideally, '*pursuing ... 1.5°C*'. While suites of 2°C scenarios exist in the literature, the IAM approach typically underplays the scope and importance of near-term mitigation and in particular the socio-technical opportunities for reducing energy demand as a way to reduce mitigation rates in later years (Anderson & Bows, 2011; Anderson & Peters, 2016). The pathways presented in this article pay greater attention to these issues and the inertia of existing energy-systems (Millar et al., 2016; Otto et al., 2013; Pfeiffer, Millar, Hepburn, & Beinhocker, 2016; Rogelj, den Elzen, et al., 2016) to broaden the view of available mitigation options, and implications thereof for the Paris commitments. They offer a complement to scenarios from the IAMs, virtually all of which have a significant reliance on future NETs to remove hundreds of billions of tonnes of CO₂ directly from the atmosphere in future decades, thereby avoiding a steeper CO₂ reduction pathway.

Providing complementary visions ensures policy makers have a broader solution space than offered by the economically optimized outputs of IAMs. Equipped with this richer portfolio, a more comprehensive assessment of the challenges posed by the Paris Agreement can be readily articulated. Specifically, this article points to how new climate-focused policies in the big emitting nations, and across the aviation and shipping sectors, need to be informed by: (1) the equity dimension of the Paris Agreement, (2) the sensitivity of constrained carbon budgets to short-term trends and (3) the climate risks for society posed by an almost ubiquitous inclusion of NETs within 2°C scenarios. Focusing on the scale of the challenge *without* widespread NETs draws greater attention to how delays to implementing stringent mitigation policy, including curbing energy demand, threatens the feasibility of the Paris commitments. The sooner the scale of the mitigation challenge informs meaningful action to curtail emissions, the greater will be the likelihood of avoiding a 2°C rise in the global mean surface temperature – even if this likelihood is now very low.

Notes

1. This works for CO₂ only, not equivalent, and does not hold beyond 2000 GtC (pp. 17; IPCC, 2013).
2. Taiwan is included in China due to the aggregation of economic indicators for this region.
3. Statistical clustering employed provided no more robust a grouping system than comparison and expert judgment.
4. A gap not greater than 1, where 1 is the difference between two nations if all nations were to be ranked in order across each indicator.
5. More information on the clustering method available in the [Appendix](#).
6. A range of 2900–3200 GtCO₂ depending on non-CO₂ drivers.
7. A range of 2550–3150 GtCO₂ depending on non-CO₂ drivers.
8. Mitigation technologies or approaches are not specified in the pathways, so in theory some negative emissions technologies could be providing a reduction in absolute CO₂ emissions, but not sufficient to take the pathway below zero.
9. Based on a conversion efficiency of 35% (net of the CCS process), using BECCS primary energy data in Fuss et al. (2016) and background data provided by a co-author.
10. The NDCs formulated in either CO₂ and other GHGs separately, or CO₂ equivalent. Assumptions for CO₂ are either derived directly from information provided, or interpreted using analysis by the Climate Action Tracker, 2015.
11. This is an area where different equity principles (Bretschger, 2013) and interpretations of fairness give different outcomes for carbon budget allocations. However, the Paris Agreement draws particular attention to the importance of ethical issues such as equity and how poorer nations will need a significant grace period to decarbonize energy systems. Specifically, 'peaking will take longer for developing country Parties' (Paris Agreement, Article 4.1). However, as Anderson and Bows (2011) note, even when allowance is made for a delay, current significant differences in CO₂ per capita between wealthy and poorer nations still leaves cumulative emissions per capita within 2°C scenarios larger in wealthier nations. Here, the specific text 'weak consideration of equity' refers to the Development scenario where poorer groups reach a peak in CO₂ at a later date than the other groups ([Figure A5](#)).
12. What is or isn't feasible is subjective. Here 'infeasible' is specifically defined as long-run mitigation of over 10% p.a. While such mitigation has not been delivered in practice, and is twice that following the economic breakup of the Soviet Union,

provisional work suggests a combination of supply and demand technologies, allied with policies on behaviour and practices, could deliver mitigation rates of up to 10% p.a. (Anderson, Quéré, & McLachlan, 2014; Watson et al., 2014).

Acknowledgements

The authors would like to acknowledge a supporting contribution to this work from Matthias Endres.

Disclosure statement

No potential conflict of interest was reported by the authors.

Funding

This research has been in part supported by the following grants and sources of funding: EPSRC Shipping in Changing Climates Project [EP/K039253/1]; UKERC funded RACER Project; EPSRC Stepping Up Project [EP/N00583X/1]; and Zennström Professorship, University of Uppsala.

ORCID

Alice Larkin  <http://orcid.org/0000-0003-4551-1608>

Jaise Kuriakose  <http://orcid.org/0000-0002-8536-8984>

Maria Sharmina  <http://orcid.org/0000-0002-5521-700X>

References

- Ackerman, F., DeCanio, S. J., Howarth, R. B., & Sheeran, K. (2009). Limitations of integrated assessment models of climate change. *Climatic Change*, 95(3), 297–315. doi:10.1007/s10584-009-9570-x
- Allen, M. R., Frame, D. J., Huntingford, C., Jones, C. D., Lowe, J. A., Meinshausen, M., & Meinshausen, N. (2009). Warming caused by cumulative carbon emissions towards the trillionth tonne. *Nature*, 458(7242), 1163–1166. doi:10.1038/nature08019
- Anderson, K. (2015). Duality in climate science. *Nature Geoscience*, 8(12), 898–900.
- Anderson, K., & Bows, A. (2011). Beyond 'dangerous' climate change: Emission scenarios for a new world. *Philosophical Transactions of the Royal Society A: Mathematical, Physical and Engineering Sciences*, 369(1934), 20–44. doi:10.1098/rsta.2010.0290
- Anderson, K., Bows, A., & Mander, S. (2008). From long-term targets to cumulative emission pathways: Reframing UK climate policy. *Energy Policy*, 36(10), 3714–3722.
- Anderson, K., & Peters, G. (2016). The trouble with negative emissions: Reliance on negative emission concepts locks in humankind's carbon addiction. *Science*, 354(6309), 182–183. doi:10.1126/science.aah4567
- Anderson, K., Quéré, C. L., & McLachlan, C. (2014). Radical emission reductions: The role of demand reductions in accelerating full decarbonization. *Carbon Management*, 5(4), 321–323. doi:10.1080/17583004.2014.1055080
- Bows, A., Mander, S., Starkey, R., Bleda, M., & Anderson, K. (2006). *Living within a carbon budget*. Tyndall Centre, Manchester. Retrieved from Report commissioned by Friends of the Earth and the Co-operative Bank.
- Bows-Larkin, A. (2015). All adrift: Aviation, shipping, and climate change policy. *Climate Policy*, 15(6), 681–702. doi:10.1080/14693062.2014.965125
- Bows-Larkin, A., McLachlan, C., Mander, S., Wood, R., Röder, M., Thornley, P., ... Sharmina, M. (2014). Importance of non-CO₂ emissions in carbon management. *Carbon Management*, 5(2), 193–210. doi:10.1080/17583004.2014.913859
- Brack, D. (2017). *Woody biomass for power and heat: Impacts on the global climate* (pp. 3–4, 31–36). London: Chatham House.
- Braun, C., Merk, C., Pönitzsch, G., Rehdanz, K., & Schmidt, U. (2017). Public perception of climate engineering and carbon capture and storage in Germany: Survey evidence. *Climate Policy*, 5(1), 1–14. doi:10.1080/14693062.2017.1304888
- Bretschger, L. (2013). Climate policy and equity principles: Fair burden sharing in a dynamic world. *Environment and Development Economics*, 18(5), 517–536. doi:10.1017/S1355770X13000284
- Calvin, K., Wise, M., Clarke, L., Edmonds, J., Kyle, P., Luckow, P., & Thomson, A. (2013). Implications of simultaneously mitigating and adapting to climate change: Initial experiments using GCAM. *Climatic Change*, 117(3), 545–560. doi:10.1007/s10584-012-0650-y
- Connolly, R. (2015). *Troubled Times: Stagnation, sanctions and the prospects for economic reform in Russia*. London: Chatham House. Retrieved from Russia and Eurasia Programme: http://www.chathamhouse.org/sites/files/chathamhouse/field/field_document/20150224TroubledTimesRussiaConnolly.pdf
- Consolidated statement of continuing ICAO policies and practices related to environmental protection – Global Market-based Measure (MBM) scheme (2016).
- Crastan, V. (2014). *Global energy demand and 2-degree target, report 2014*. Switzerland: Evilard.

- Davenport, C. (2014). Emissions from India will increase, official says, *New York Times*. Retrieved from http://www.nytimes.com/2014/09/25/world/asia/25climate.html?_r=0
- Deetman, S., Hof, A. F., & van Vuuren, D. P. (2015). Deep CO₂ emission reductions in a global bottom-up model approach. *Climate Policy*, 15(2), 253–271. doi:10.1080/14693062.2014.912980
- Federici, S., Tubiello, F. N., Salvatore, M., Jacobs, H., & Schmidhuber, J. (2015). New estimates of CO₂ forest emissions and removals: 1990–2015. *Forest Ecology and Management*, 352, 89–98. doi:10.1016/j.foreco.2015.04.022
- Fuss, S., Canadell, J. G., Peters, G. P., Tavoni, M., Andrew, R. M., Ciais, P., ... Yamagata, Y. (2014). Betting on negative emissions. *Nature Climate Change*, 4(10), 850–853. doi:10.1038/nclimate2392
- Fuss, S., Jones, C. D., Kraxner, F., Peters, G. P., Smith, P., Tavoni, M., ... Yamagata, Y. (2016). Research priorities for negative emissions. *Environmental Research Letters*, 11(11), 115007. doi:10.1088/1748-9326/11/11/115007
- Gough, C., & Vaughan, N. E. (2015). *Synthesising existing knowledge on the feasibility of BECCS*. London: Work supported by AVOID 2 programme (DECC). Retrieved from Can we avoid dangerous climate change?: http://avoid-net-uk.cc.ic.ac.uk/wp-content/uploads/delightful-downloads/2015/07/Synthesising-existing-knowledge-on-the-feasibility-of-BECCS-AVOID-2_WPD1a_v1.pdf
- Hansen, J., Kharecha, P., Sato, M., Masson-Delmotte, V., Ackerman, F., Beerling, D., ... Zachos, J. (2013). Assessing 'Dangerous Climate Change': Required reduction of carbon emissions to protect young people, future generations and nature. *PLoS ONE*, 8(12), e81648. doi:10.1371/journal.pone.0081648
- Houghton, R. A., House, J. I., Pongratz, J., van der Werf, G. R., DeFries, R. S., Hansen, M. C., ... Ramankutty, N. (2012). Carbon emissions from land use and land-cover change. *Biogeosciences*, 9(12), 5125–5142. doi:10.5194/bg-9-5125-2012
- Höhne, N., den Elzen, M., & Escalante, D. (2014). Regional GHG reduction targets based on effort sharing: A comparison of studies. *Climate Policy*, 14(1), 122–147. doi:10.1080/14693062.2014.849452
- Huang, J., & Nagasaka, K. (2012). *The trends of Japanese Electric Utility Industry under Kyoto Protocol after 311 Earthquake*. International conference on environmental sciences and development, Hong Kong.
- International Energy Agency. (2015). *IEA world energy outlook special report 2015: Energy and climate change*. Retrieved from <http://www.iea.org/publications/freepublications/publication/weo-2015-special-report-energy-climate-change.html>
- International Energy Agency. (2016). *IEA world energy outlook special report 2016: Energy and climate change*. Retrieved from <http://www.iea.org/publications/freepublications/publication/weo-2015-special-report-energy-climate-change.html>
- IPCC. (2013). *Climate change 2013: The physical science basis. Contribution of working group I to the fifth assessment report of the Intergovernmental Panel of Climate Change*. (T. Stocker, D. Qin, G.-K. Plattner, M. Tignor, S. Allen, J. Boschung, ... P. Midgley, Eds.). Cambridge: Cambridge University Press.
- IPCC. (2014a). *Climate change 2014: Mitigation of climate change. Contribution of working group III to the fifth assessment report of the Intergovernmental Panel on Climate Change*. (O. Edenhofer, R. Pichs-Madruga, Y. Sokona, E. Farahni, S. Kadner, K. Seyboth, ... J. Minx, Eds.). Cambridge: Cambridge University Press.
- IPCC. (2014b). *Climate change 2014: Synthesis report. Contribution of working groups I, II and III to the fifth assessment report of the Intergovernmental Panel on Climate Change*. (R. Pachauri & L. Meyer, Eds.). Geneva: Author.
- Jain, A. K., Meiyappan, P., Song, Y., & House, J. I. (2013). CO₂ emissions from land-use change affected more by nitrogen cycle, than by the choice of land-cover data. *Global Change Biology*, 19(9), 2893–2906. doi:10.1111/gcb.12207
- Jordan, A., Rayner, T., Schroeder, H., Adger, N., Anderson, K., Bows, A., ... Whitmarsh, L. (2013). Going beyond two degrees? The risks and opportunities of alternative options. *Climate Policy*, 13(6), 751–769. doi:10.1080/14693062.2013.835705
- Korppoo, A., & Kokorin, A. (2017). Russia's 2020 GHG emissions target: Emission trends and implementation. *Climate Policy*, 17(2), 113–130. doi:10.1080/14693062.2015.1075373
- Korsbakken, J. I., Peters, G. P., & Andrew, R. M. (2016). Uncertainties around reductions in China's coal use and CO₂ emissions. *Nature Climate Change*, 6, 687–690. doi:10.1038/nclimate2963
- Kyle, P., Müller, C., Calvin, K., & Thomson, A. (2014). Meeting the radiative forcing targets of the representative concentration pathways in a world with agricultural climate impacts. *Earth's Future*, 2(2), 83–98. doi:10.1002/2013EF000199
- Lamb, W. F., & Rao, N. D. (2015). Human development in a climate-constrained world: What the past says about the future. *Global Environmental Change*, 33, 14–22. doi:10.1016/j.gloenvcha.2015.03.010
- Le Quéré, C., Moriarty, R., Andrew, R. M., Canadell, J. G., Sitch, S., Korsbakken, J. I., ... Zeng, N. (2015). Global carbon budget 2015. *Earth System Science Data*, 7(2), 349–396. doi:10.5194/essd-7-349-2015
- Le Quéré, C., Moriarty, R., Andrew, R. M., Peters, G. P., Ciais, P., Friedlingstein, P., ... Zeng, N. (2014). Global carbon budget 2014. *Earth System Science Data Discussions*, 7(2), 521–610. doi:10.5194/essdd-7-521-2014
- Liu, Z., Guan, D., Wei, W., Davis, S. J., Ciais, P., Bai, J., ... He, K. (2015). Reduced carbon emission estimates from fossil fuel combustion and cement production in China. *Nature*, 524(7565), 335–338. Supplementary information. doi:10.1038/nature14677
- Mann, M. E. (2009). Defining dangerous anthropogenic interference. *Proceedings of the National Academy of Sciences*, 106, 4065–4066. doi:10.1073/pnas.0901303106
- Millar, R., Allen, M., Rogelj, J., & Friedlingstein, P. (2016). The cumulative carbon budget and its implications. *Oxford Review of Economic Policy*, 32(2), 323–342. doi:10.1093/oxrep/grw009
- Moss, S., Pahl-Wostl, C., & Downing, T. (2001). Agent-based integrated assessment modelling: The example of climate change. *Integrated Assessment*, 2(1), 17–30. doi:10.1023/A:1011527523183
- Otto, A., Otto, F. E. L., Boucher, O., Church, J., Hegerl, G., Forster, P. M., ... Allen, M. R. (2013). Energy budget constraints on climate response. *Nature Geoscience*, 6(6), 415–416. Supplementary information. doi:10.1038/ngeo1836

- Pahl-Weigl, C., Giupponi, C., Richards, K., Binder, C., de Sherbinin, A., Sprinz, D., ... van Bers, C. (2013). Transition towards a new global change science: Requirements for methodologies, methods, data and knowledge. *Environmental Science & Policy*, 28, 36–47. doi:10.1016/j.envsci.2012.11.009
- Peters, G., Andrew, R., Solomon, S., & Friedlingstein, P. (2015). Measuring a fair and ambitious climate agreement using cumulative emissions. *Environmental Research Letters*, 10(10), 105004. doi:10.1088/1748-9326/10/10/105004
- Peters, G. P. (2016). The 'best available science' to inform 1.5 °C policy choices. *Nature Climate Change*, 6(7), 646–649. Supplementary information. doi:10.1038/nclimate3000
- Pfeiffer, A., Millar, R., Hepburn, C., & Beinhocker, E. (2016). The '2°C capital stock' for electricity generation: Committed cumulative carbon emissions from the electricity generation sector and the transition to a green economy. *Applied Energy*, 179, 1395–1408. doi:10.1016/j.apenergy.2016.02.093
- Qi, Y., Stern, N., Wu, T., Lu, J., & Green, F. (2016). China's post-coal growth. *Nature Geoscience*, 9(8), 564–566. doi:10.1038/ngeo2777
- Raupach, M. R., Davis, S. J., Peters, G. P., Andrew, R. M., Canadell, J. G., Ciais, P., ... Le Quere, C. (2014). Sharing a quota on cumulative carbon emissions. *Nature Climate Change*, 4(10), 873–879. Supplementary information. doi:10.1038/nclimate2384
- Rogelj, J., den Elzen, M., Höhne, N., Fransen, T., Fekete, H., Winkler, H., ... Meinshausen, M. (2016). Paris agreement climate proposals need a boost to keep warming well below 2 °C. *Nature*, 534(7609), 631–639. Supplementary information. doi:10.1038/nature18307
- Rogelj, J., Hare, W., Lowe, J., van Vuuren, D. P., Riahi, K., Matthews, B., ... Meinshausen, M. (2011). Emission pathways consistent with a 2°C global temperature limit. *Nature Climate Change*, 1(8), 413–418. Supplementary information. doi:10.1038/nclimate1258
- Rogelj, J., Meinshausen, M., Schaeffer, M., Knutti, R., & Riahi, K. (2015). Impact of short-lived non-CO₂ mitigation on carbon budgets for stabilizing global warming. *Environmental Research Letters*, 10(7), 075001. doi:10.1088/1748-9326/10/7/075001
- Rogelj, J., Nabel, J., Chen, C., Hare, W., Markmann, K., Meinshausen, M., ... Höhne, N. (2010). Copenhagen Accord pledges are paltry. *Nature*, 464(7292), 1126–1128.
- Rogelj, J., Schaeffer, M., Friedlingstein, P., Gillett, N. P., van Vuuren, D. P., Riahi, K., ... Knutti, R. (2016). Differences between carbon budget estimates unravelled. *Nature Climate Change*, 6(3), 245–252. doi:10.1038/nclimate2868
- Russell, M. (2015). The Russian economy - will Russia ever catch up? In-depth analysis. *The European Parliamentary Research Service (EPRS)*. doi:10.2861/843676
- Saatchi, S. S., Harris, N. L., Brown, S., Lefsky, M., Mitchard, E. T. A., Salas, W., ... Morel, A. (2011). Benchmark map of forest carbon stocks in tropical regions across three continents. *Proceedings of the National Academy of Sciences*, 108(24), 9899–9904.
- Sharmina, M., Bows-Larkin, A., & Anderson, K. (2015). Russia's cumulative carbon budgets for a global 2°C target. *Carbon Management*, 6(5–6), 197–205. doi:10.1080/17583004.2015.1113616
- Sherwood, S. C., Bony, S., & Dufresne, J.-L. (2014). Spread in model climate sensitivity traced to atmospheric convective mixing. *Nature*, 505(7481), 37–42. doi:10.1038/nature12829
- Smith, L., & Torn, M. (2013). Ecological limits to terrestrial biological carbon dioxide removal. *Climatic Change*, 118(1), 89–103. doi:10.1007/s10584-012-0682-3
- Smith, T. W. P., Jalkanen, J. P., Anderson, B. A., Corbett, J. J., Faber, J., Hanayama, S., ... Pandey, A. (2015). *Third IMO GHG study 2014*. London: International Maritime Organisation.
- Stern, N. (2016). Economics: Current climate models are grossly misleading. *Nature*, 530(7591), 407–409. doi:10.1038/530407a
- UNEP. (2014). *The emissions gap report 2014*. Nairobi: United Nations Environment Programme.
- van Vliet, J., Hof, A. F., Mendoza Beltran, A., van den Berg, M., Deetman, S., den Elzen, M. G. J., ... van Vuuren, D. P. (2014). The impact of technology availability on the timing and costs of emission reductions for achieving long-term climate targets. *Climatic Change*, 123(3), 559–569. doi:10.1007/s10584-013-0961-7
- van Vuuren, D., Stehfest, E., den Elzen, M. J., Kram, T., van Vliet, J., Deetman, S., ... van Ruijven, B. (2011). RCP2.6: Exploring the possibility to keep global mean temperature increase below 2°C. *Climatic Change*, 109(1–2), 95–116. doi:10.1007/s10584-011-0152-3
- Vaughan, N., & Gough, C. (2016). Expert assessment concludes negative emissions scenarios may not deliver. *Environmental Research Letters*, 11(9), 095003. doi:10.1088/1748-9326/11/9/095003
- Watson, R., Nakicenovic, N., Rosenthal, E., Goldenberg, J., Amann, M., & Pachauri, S. (Producer). (2014). *Tackling the challenge of climate change: A near-term actionable mitigation agenda* (54pp.). Alliance of Small Island States (AOSIS). Retrieved from <http://pure.iiasa.ac.at/11188/>

Appendix

Table A1. Cumulative emission budgets from IPCC AR5.

| Cumulative CO ₂ emissions parameter | Value | Probability | Source | Notes |
|--|---|---|---------------------------------|--|
| 2011–2100 for a 1.5°C target | 90–310 GtCO ₂ | A more likely than not chance to bring temperature change <i>back to</i> below 1.5°C by 2100 | WG3 TS, p. 56; WG3 Ch.6, p. 441 | 'Assessing this goal is currently difficult because no multi-model study has explored these scenarios. The limited number of published studies exploring this goal have produced associated scenarios that are characterized by (1) immediate mitigation; (2) the rapid up-scaling of the full portfolio of mitigation technologies; and (3) development along a low-energy demand trajectory.' (WG3 TS, p. 56) 'Global CO ₂ eq emissions in 2050 are between 70–95% below 2010 emissions, and they are between 110–120% below 2010 emissions in 2100.' (WG3 TS, footnote 12, p. 56) |
| 2012–2100 for RCP2.6 | Mean 270 GtC (990 GtCO ₂). Range 140–410 GtC (510–1505 GtCO ₂) (Table SPM.3, p. 27) | Warming by 2100 is ' unlikely to exceed 2°C for RCP2.6' (p. 20) | WG1 SPM (pp. 4, 20, 27). | RCP2.6. Warming by 2100 is unlikely to exceed 2°C. ' <i>Unlikely</i> ' stands for a 0–33% probability (footnote 2, p. 4). Budgets generated by the CMIP5 ESM (Coupled Model Intercomparison Project Phase 5, Earth System Models) ensemble. Same values for cumulative emissions as in the Technical Summary (WG1 TS, p. 93), the Exec. Summary of Ch.6 (WG1 Ch.6, p. 468) and main text of Ch.6 (WG1 Ch.6 Table 6.12, p. 526), although the unit is 'PgC'. |
| From all anthropogenic sources since the period 1861–1880 (<i>not discussed till when</i>) | <1000 GtC (3670 GtCO ₂) | Probability of >66% of limiting warming to less than 2°C | WG1 SPM (p. 27) | This amount decreases to ~ 790 GtC (2900 GtCO ₂) when accounting for non-CO ₂ forcings as in RCP2.6. Note that 515 [445–585] GtC (1890 [1630–2150] GtCO ₂) was emitted by 2011. Same values for cumulative emissions as in the Technical Summary (WG1 TS, p. 103) and Ch.12 (WG1 Ch.12, p. 1113), although units are 'PgC'. 'These estimates were derived by computing the fraction of CMIP5 ESMs and EMICs that stay below 2°C for given cumulative emissions following RCP8.5 [...]. The non-CO ₂ forcing in RCP8.5 is higher than in RCP2.6. Because all likelihood statements in calibrated IPCC language are open intervals, the provided estimates are thus both conservative and consistent choices valid for non-CO ₂ forcings across all RCP scenarios' (WG1 Ch.12, p. 1113) |
| 2012–2100 for RCP2.6 | 275 PgC | <i>Not discussed</i> | WG1 Ch.6 Table 6.12 (p. 526) | These cumulative budgets are generated by IAMs (Integrated Assessment Models) as opposed to the CMIP5 ESM ensemble in the first four rows of this table. |
| 2011–2100 for RCP2.6 | 630–1180 GtCO ₂ | Likely to stay below 2°C | WG3 SPM Table SPM.1 (p. 13) | ' <i>Likely</i> ' stands for a 66–100% likelihood (WG3 SPM, footnote 8, p. 13) Same values for cumulative emissions and probabilities for |

(Continued)

Table A1. Continued.

| Cumulative CO ₂ emissions parameter | Value | Probability | Source | Notes |
|--|--|---|--|--|
| 2011–2100 for 430–480 ppm | 630–1180 GtCO ₂ | 12–37% of exceeding 2°C | WG3 Ch.6, Tables 6.2 and 6.3 (pp. 430–431) | temperatures as in the Technical Summary (WG3 TS, Table TS1, p. 54) |
| From all anthropogenic sources since 1870 (<i>not discussed till when</i>) | <2900 GtCO ₂ (2550–3150 GtCO ₂ ‘depending on non-CO ₂ drivers’) | >66% of less than 2°C | SYN SPM (p. 10) | RCP2.6 is ‘the corresponding RCP falling within the scenario category based on 2100 CO ₂ equivalent concentration’ range (WG3 Ch.6, note 3 to Table 6.2, p. 430). ‘About 1900 GtCO ₂ had already been emitted by 2011’ (SYN SPM, p. 10). Subtracting these historical emissions from the values in the second column gives a remaining cumulative CO ₂ budget of 1000 GtCO₂ (range 650–1250 GtCO ₂ ‘depending on non-CO ₂ drivers’), from 2011. |
| From 2011 (<i>not discussed till when</i>) | 1000 GtCO ₂ (750–1400 GtCO ₂) | 66% of simulations staying below 2°C [‘Fraction of simulations meeting goal’, rather than a ‘probability’] | SYN, Table 2.2 (p. 64) | ‘... assuming non-CO ₂ forcing follows the RCP8.5 scenario. Similar cumulative emissions are implied by other RCP scenarios’ (SYN, note (c) to Table 2.2, p. 64) ‘Note that the 66% range in this table should not be equated to the likelihood statements in [SYN] Table SPM.1 and [SYN] Table 3.1 and WGIII Table SPM.1. The assessment in these latter tables is not only based on the probabilities calculated for the full ensemble of scenarios in WGIII using a single climate model, but also the assessment in WGI of the uncertainty of the temperature projections not covered by climate models.’ (SYN, note (b) to Table 2.2, p. 64) |
| From all anthropogenic sources since the period 1861–1880 (<i>not discussed till when</i>) | <1210 GtC (4440 GtCO ₂) | Probability of >50% of limiting warming to less than 2°C | WG1 SPM (p. 27) | This amount decreases to ~820 GtC (3010 GtCO ₂) when accounting for non-CO ₂ forcings as in RCP2.6. Note that 515 [445–585] GtC (1890 [1630–2150] GtCO ₂) was emitted by 2011. Same values for cumulative emissions as in the Technical Summary (WG1 TS, p. 103) and Ch.12 (WG1 Ch.12, p. 1113), although units are ‘PgC’. ‘These estimates were derived by computing the fraction of CMIP5 ESMs and EMICs that stay below 2°C for given cumulative emissions following RCP8.5 [...]. The non-CO ₂ forcing in RCP8.5 is higher than in RCP2.6. Because all likelihood statements in calibrated IPCC language are open intervals, the provided estimates are thus both conservative and consistent choices valid for non-CO ₂ forcings across all RCP scenarios.’ (WG1 Ch.12, p. 1113) |
| From all anthropogenic sources since the period 1861–1880 (<i>not discussed till when</i>) | <1570 GtC (5760 GtCO ₂) | Probability of >33% of limiting warming to less than 2°C | WG1 SPM (p. 27) | This amount decreases to ~900 GtC (3300 GtCO ₂) when accounting for non-CO ₂ forcings as in RCP2.6. Note that 515 [445–585] GtC (1890 [1630–2150] GtCO ₂) was emitted by 2011. Same values for cumulative emissions as in the Technical Summary (WG1 TS, p. 103) and Ch.12 (WG1 Ch.12, p. 1113), although units are ‘PgC’. ‘These estimates were derived by computing the fraction of CMIP5 ESMs and EMICs that stay below 2°C for given cumulative emissions following RCP8.5 [...]. The non-CO ₂ forcing in RCP8.5 is higher than in RCP2.6. Because all likelihood statements in |

| | | | | |
|---|--|--|--|---|
| 2012–2100 for RCP4.5 | Mean 780 GtC (2860 GtCO ₂). (2180–3690 GtCO ₂) (Table SPM.3, p. 27) | Warming by 2100 is ‘more likely than not to exceed 2°C for RCP4.5’ (p. 20) | WG1 SPM (pp. 4, 20, 27). | calibrated IPCC language are open intervals, the provided estimates are thus both conservative and consistent choices valid for non-CO ₂ forcings across all RCP scenarios.’ (WG1 Ch.12, p. 1113) ‘ <i>More likely than not</i> ’ stands for a >50–100% probability (footnote 2, p. 4) These cumulative budgets are generated by the CMIP5 ESM (Coupled Model Intercomparison Project Phase 5, Earth System Models) ensemble, rather than by IAMs (Integrated Assessment Models). Same values for cumulative emissions as in the Technical Summary (WG1 TS, p. 93), the Exec. Summary of Ch.6 (WG1 Ch.6, p. 468) and main text of Ch.6 (WG1 Ch.6 Table 6.12, p. 526), although the unit is ‘PgC’. |
| From all anthropogenic sources since 1870 (<i>not discussed till when</i>) | <3000 GtCO ₂ (2900–3200 GtCO ₂) | >50% of less than 2°C | SYN SPM footnote 7 (p. 10) | ‘About 1900 GtCO ₂ had already been emitted by 2011’ (SYN SPM, p. 10). Subtracting these historical emissions from the values in the second column gives a remaining cumulative CO ₂ budget of 1100 GtCO₂ (range 1000–1300 GtCO ₂ ‘depending on non-CO ₂ drivers’), from 2011. |
| From 2011 (<i>not discussed till when</i>) | 1500 GtCO ₂ (1150–2050 GtCO ₂) | 33% of simulations staying below 2°C [‘Fraction of simulations meeting goal’, rather than a ‘probability’] | SYN, Table 2.2 (p. 64) | ‘... assuming non-CO ₂ forcing follows the RCP8.5 scenario. Similar cumulative emissions are implied by other RCP scenarios’ (SYN, note (c) to Table 2.2, p. 64) |
| 2012–2100 for RCP4.5 | 735 PgC | <i>Not discussed</i> | WG1 Ch.6 Table 6.12 (p. 526) | These cumulative budgets are generated by IAMs (Integrated Assessment Models) as opposed to the CMIP5 ESM ensemble in the first four rows of this table. |
| 2011–2100 for RCP4.5 | 1870–2440 and 2570–3340 GtCO ₂ | Unlikely to stay below 2°C | WG3 SPM Table SPM.1 (p. 13) | ‘ <i>Unlikely</i> ’ stands for a 0–33% likelihood (WG3 SPM, footnote 8, p. 13) Same values for cumulative emissions and probabilities for temperatures as in the Technical Summary. (WG3 TS, Table TS1, p. 54) |
| 2011–2100 for 580–650 and 650–720 ppm | 1870–2440 and 2570–3340 GtCO ₂ | 74–93% and 88–95% of exceeding 2°C | WG3 Ch.6, Tables 6.2 and 6.3 (pp. 430–431) | RCP4.5 is ‘the corresponding RCP falling within the scenario category based on 2100 CO ₂ equivalent concentration’ range. (WG3 Ch.6, note 3 to Table 6.2, p. 430) |
| From 2011 (<i>not discussed till when</i>) | 1300 GtCO ₂ (range 1150–1400 GtCO ₂) | 50% of simulations staying below 2°C [‘Fraction of simulations meeting goal’, rather than a ‘probability’] | SYN, Table 2.2 (p. 64) | ‘... assuming non-CO ₂ forcing follows the RCP8.5 scenario. Similar cumulative emissions are implied by other RCP scenarios’ (SYN, note (c) to Table 2.2, p. 64) |
| 2012–2100 for RCP6.0 | Mean 1060 GtC or 3885 GtCO ₂ . 840–1250 GtC (3080–4585 GtCO ₂) (Table SPM.3, p. 27) | Warming by 2100 is ‘likely to exceed 2°C for RCP6.0 and RCP8.5’ (p. 20) | WG1 SPM (pp. 4, 20, 27). | ‘ <i>Likely</i> ’ stands for a 66–100% probability (footnote 2, p. 4) These cumulative budgets are generated by the CMIP5 ESM (Coupled Model Intercomparison Project Phase 5, Earth System Models) ensemble. Same values for cumulative emissions as in the Technical Summary (WG1 TS, p. 93), the Exec. Summary of Ch.6 (WG1 |

(Continued)

Table A1. Continued.

| Cumulative CO ₂ emissions parameter | Value | Probability | Source | Notes |
|--|---|---|--|---|
| 2012–2100 for RCP6.0 | 1165 PgC | <i>Not discussed</i> | WG1 Ch.6 Table 6.12 (p. 526) | Ch.6, p. 468) and main text of Ch.6 (WG1 Ch.6 Table 6.12, p. 526), although the unit is 'PgC'. These cumulative budgets are generated by IAMs (Integrated Assessment Models) as opposed to the CMIP5 ESM ensemble in the first four rows of this table. |
| 2011–2100 for RCP6.0 | 3620–4990 GtCO ₂ | Unlikely to stay below 2°C | WG3 SPM Table SPM.1 (p. 13) | 'Unlikely' stands for a 0–33% likelihood (WG3 SPM, footnote 8, p. 13) Same values for cumulative emissions and probabilities for temperatures as in the Technical Summary. (WG3 TS, Table TS1, p. 54) 'For scenarios in this category no CMIP5 run [...] as well as no MAGICC realization [...] stays below the respective temperature level. Still, an unlikely assignment is given to reflect uncertainties that might not be reflected by the current climate models.' (WG3 SPM, footnote 11, p. 13) |
| 2011–2100 for 720–1000 ppm | 3620–4990 GtCO ₂ | 97–100% of exceeding 2°C | WG3 Ch.6, Tables 6.2 and 6.3 (pp. 430–431) | RCP6.0 is 'the corresponding RCP falling within the scenario category based on 2100 CO ₂ equivalent concentration' range. (WG3 Ch.6, note 3 to Table 6.2, p. 430) |
| From all anthropogenic sources since 1870 (<i>not discussed till when</i>) | <3300 GtCO ₂ (2950–3800 GtCO ₂) | >33% of less than 2°C | SYN SPM footnote 7 (p. 10) | 'About 1900 GtCO ₂ had already been emitted by 2011' (SYN SPM, p. 10). Subtracting these historical emissions from the values in the second column gives a remaining cumulative CO ₂ budget of 1400 GtCO₂ (range 1050–1900 GtCO ₂ 'depending on non-CO ₂ drivers'), from 2011. |
| 2012–2100 for RCP8.5 | Mean 1685 GtC or 6180 GtCO ₂ . 1415–1910 GtC (5185–7005 GtCO ₂) (Table SPM.3, p. 27) | Warming by 2100 is ' likely to exceed 2°C for RCP6.0 and RCP8.5' (p. 20) | WG1 SPM (pp. 4, 20, 27). | 'Likely' stands for a 66–100% probability (footnote 2, p. 4) These cumulative budgets are generated by the CMIP5 ESM (Coupled Model Intercomparison Project Phase 5, Earth System Models) ensemble, rather than by IAMs (Integrated Assessment Models). Same values for cumulative emissions as in the Technical Summary (WG1 TS, p. 93), the Exec. Summary of Ch.6 (WG1 Ch.6, p. 468) and main text of Ch.6 (WG1 Ch.6 Table 6.12, p. 526), although the unit is 'PgC'. |
| 2012–2100 for RCP8.5 | 1855 PgC | <i>Not discussed</i> | WG1 Ch.6 Table 6.12 (p. 526) | These cumulative budgets are generated by IAMs (Integrated Assessment Models) as opposed to the CMIP5 ESM ensemble. |
| 2011 to 2100 for RCP8.5 | 5350–7010 GtCO ₂ | Unlikely to stay below 2°C | WG3 SPM Table SPM.1 (p. 13) | 'Unlikely' stands for a 0–33% likelihood (WG3 SPM, footnote 8, p. 13) Same values for cumulative emissions and probabilities for temperatures as in the Technical Summary (WG3 TS, Table TS1, p. 54) 'For scenarios in this category no CMIP5 run [...] as well as no |

| | | | | |
|--|---|---------------------------|--|--|
| 2010–2100, without ‘any explicit mitigation efforts’ | ‘potentially well over 4000 GtCO ₂ ’ | <i>Not discussed</i> | WG3 TS (p. 50) | <p>MAGICC realization [...] stays below the respective temperature level. Still, an unlikely assignment is given to reflect uncertainties that might not be reflected by the current climate models.’ (WG3 SPM, footnote 11, p. 13)</p> <p>The exact phrase: ‘the scenarios strongly suggest that absent any explicit mitigation efforts, cumulative CO₂ emissions since 2010 will exceed 700 GtCO₂ by 2030, 1500 GtCO₂ by 2050, and potentially well over 4000 GtCO₂ by 2100’ (WG3 TS, p. 50)</p> <p>AN ENIGMATIC PHRASE: ‘Note that cumulative CO₂ emissions are presented here for different periods of time (2011–2050 and 2011–2100) while cumulative CO₂ emissions in WGI AR5 are presented as total compatible emissions for the RCPs (2012–2100) or for total compatible emissions for remaining below a given temperature target with a given likelihood.’ (WG3 TS, footnote 3 to Table TS1, p. 54)</p> |
| 2011–2100 for >1000 ppm | 5350–7010 GtCO ₂ | 100–100% of exceeding 2°C | WG3 Ch.6, Tables 6.2 and 6.3 (pp. 430–431) | <p>RCP8.5 is ‘the corresponding RCP falling within the scenario category based on 2100 CO₂ equivalent concentration’ range (WG3 Ch.6, note 3 to Table 6.2, p. 430).</p> |

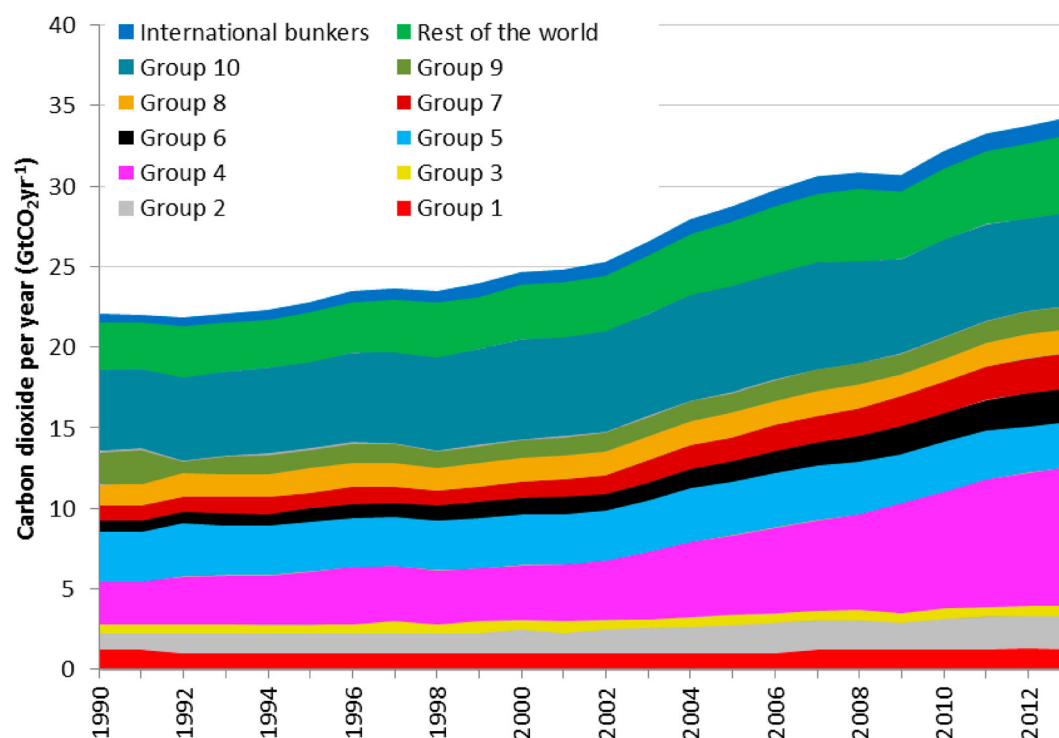


Figure A1. Group annual CO₂ emissions 1990–2014 for consumption-based accounts. [Group 1: Australia, Poland, South Africa, Ukraine. Group 2: Brazil, Mexico, South Korea, Turkey. Group 3: Canada. Group 4: China, Hong Kong, Taiwan. Group 5: France, Germany, Italy, Spain, UK; Group 6: India. Group 7: Indonesia, Iran, Kazakhstan, Saudi Arabia, Thailand. Group 8: Japan. Group 9: Russia. Group 10: US.]

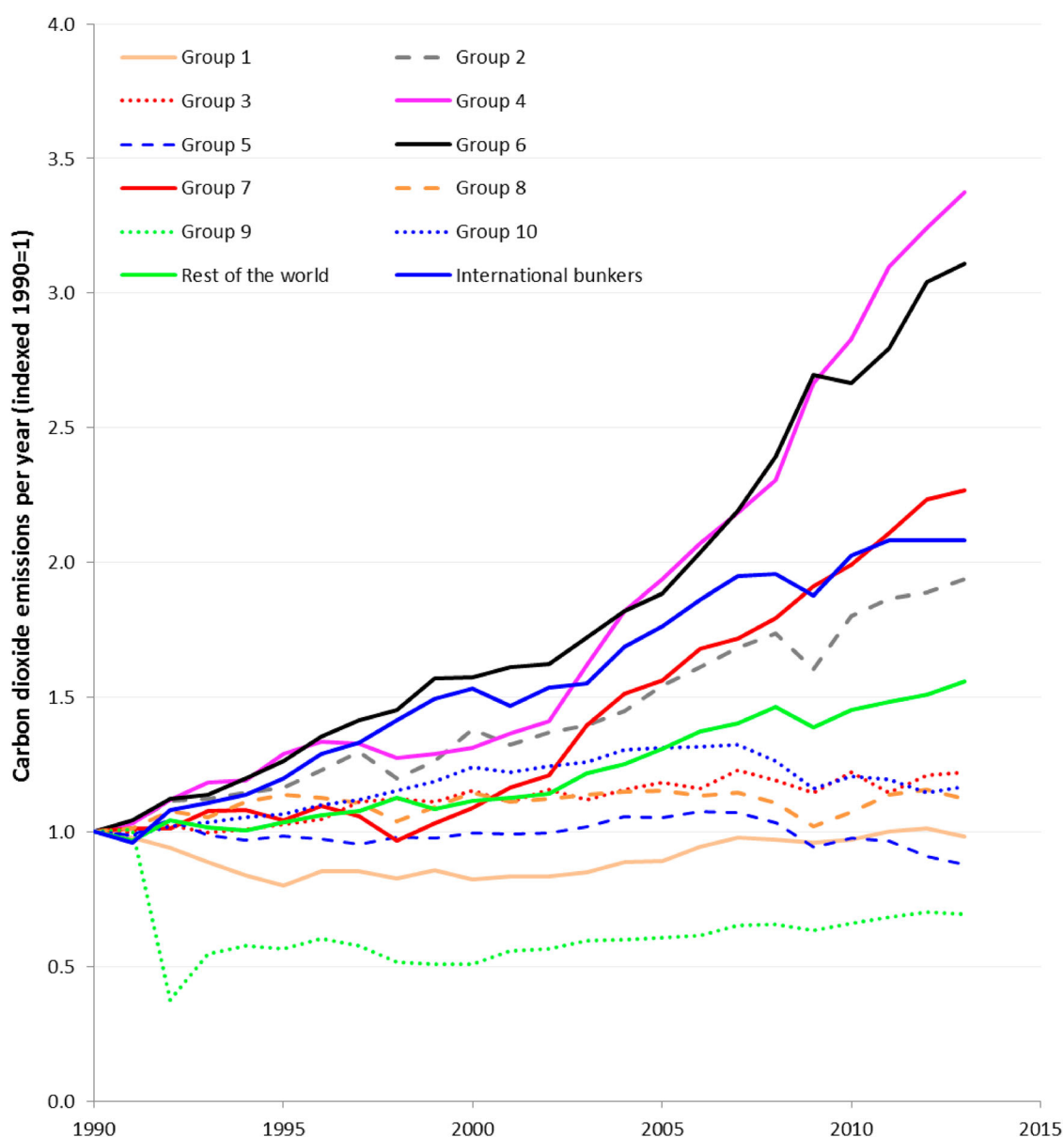


Figure A2. CO₂ emissions from the high emitting groups, bunkers plus RoW, normalized 1990=1 for consumption-based accounts. [Group 1: Australia, Poland, South Africa, Ukraine. Group 2: Brazil, Mexico, South Korea, Turkey. Group 3: Canada. Group 4: China, Hong Kong, Taiwan. Group 5: France, Germany, Italy, Spain, UK; Group 6: India. Group 7: Indonesia, Iran, Kazakhstan, Saudi Arabia, Thailand. Group 8: Japan. Group 9: Russia. Group 10: US.]

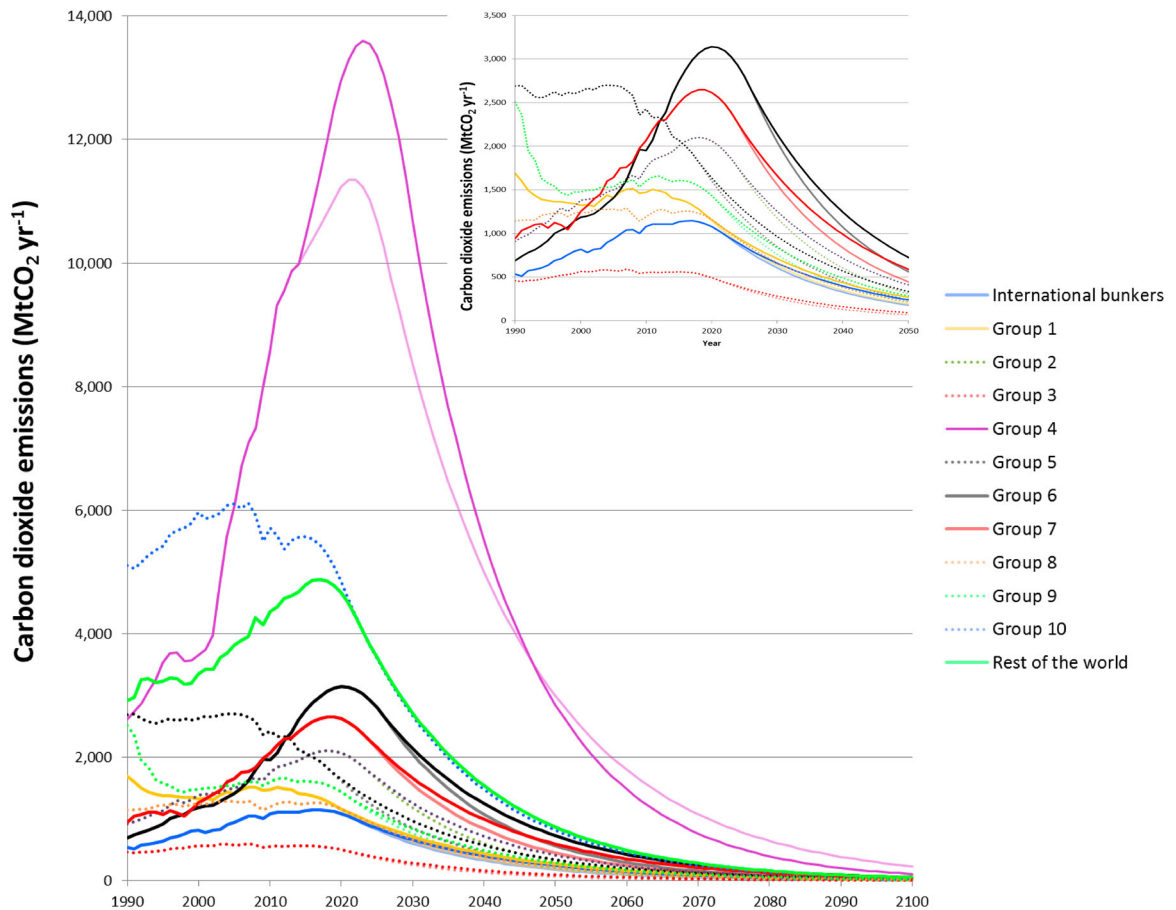


Figure A3. CO₂ from energy and industry pathways for *Immediate-China-Sus* (50%) (strong lines) and *Immediate-China-2%* (50%) (weaker coloured lines) scenarios with 1-year's post-economic downturn rate continued towards a peak for all groups apart from in China, where post-recession rates continue for 5-years in 'Sustain' and 2% growth assumed to 2020 in '2%'. Both have a 50% chance of avoiding 2°C. [Group 1: Australia, Poland, South Africa, Ukraine. Group 2: Brazil, Mexico, South Korea, Turkey. Group 3: Canada. Group 4: China, Hong Kong, Taiwan. Group 5: France, Germany, Italy, Spain, UK; Group 6: India. Group 7: Indonesia, Iran, Kazakhstan, Saudi Arabia, Thailand. Group 8: Japan. Group 9: Russia. Group 10: US.]

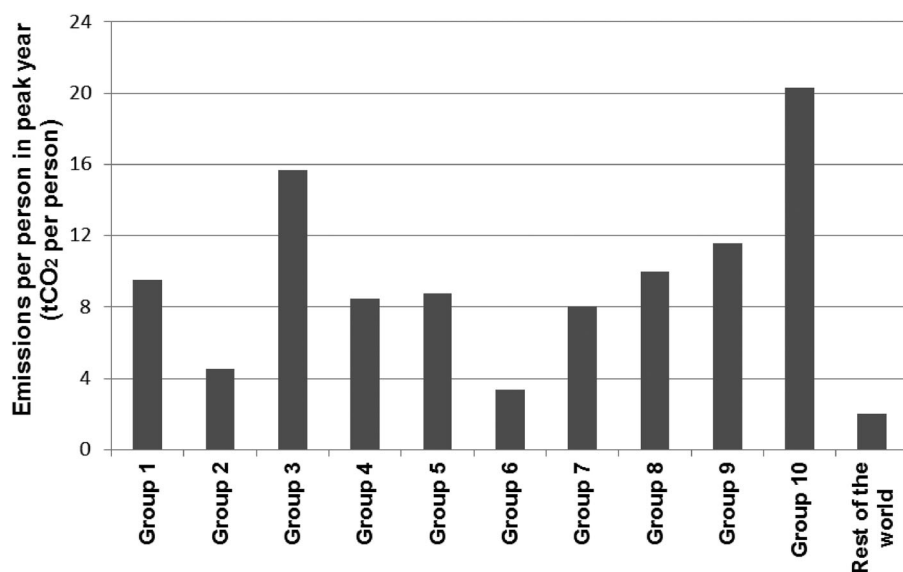


Figure A4. CO₂ emissions per capita in each group's emission peak year for 'Development'. [Group 1: Australia, Poland, South Africa, Ukraine. Group 2: Brazil, Mexico, South Korea, Turkey. Group 3: Canada. Group 4: China, Hong Kong, Taiwan. Group 5: France, Germany, Italy, Spain, UK; Group 6: India. Group 7: Indonesia, Iran, Kazakhstan, Saudi Arabia, Thailand. Group 8: Japan. Group 9: Russia. Group 10: US.]

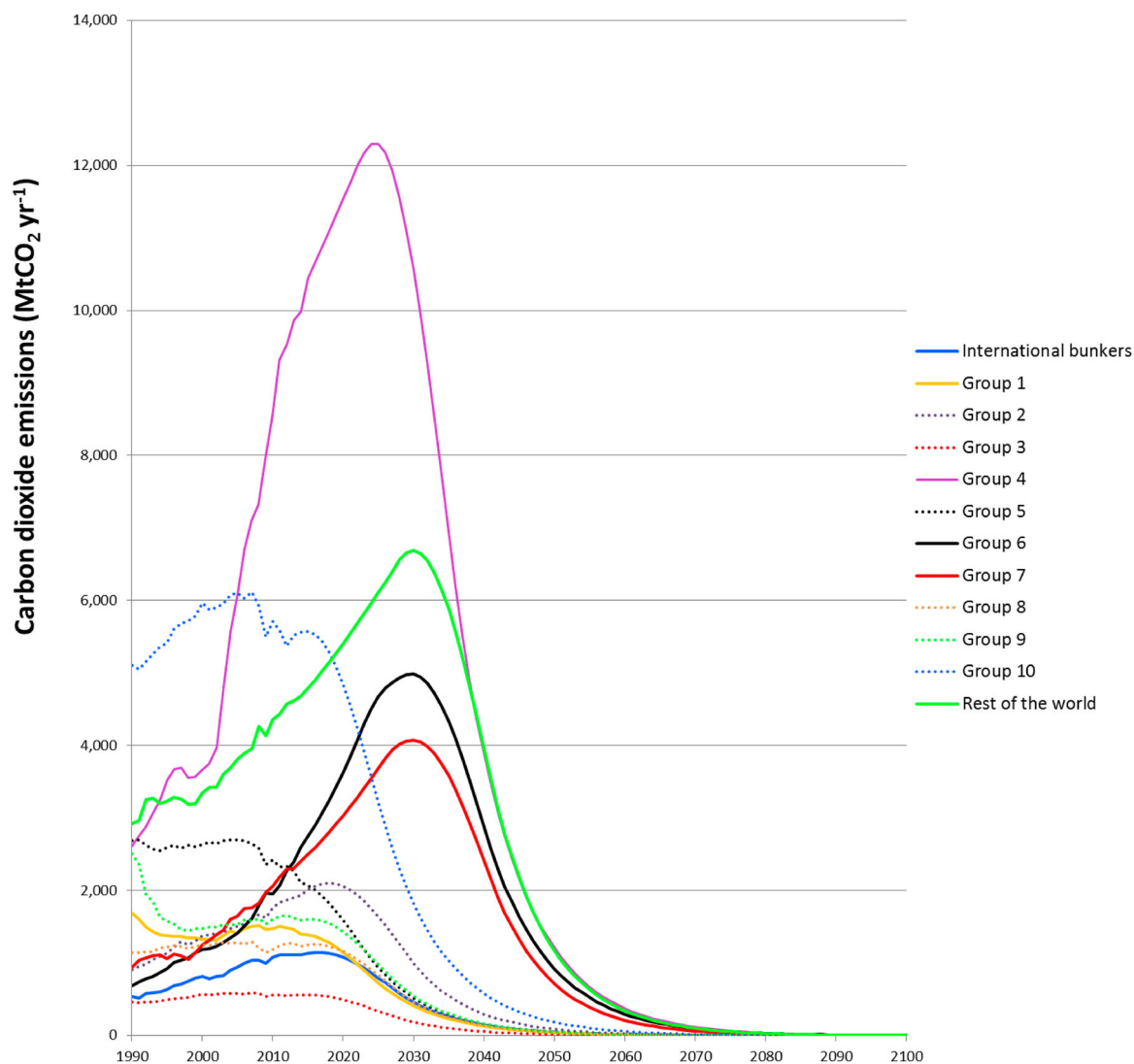


Figure A5. CO₂ from energy and industry pathways under the *Development* scenario where CO₂ in the RoW, India and Group 7 grow until a peak in 2030, with all other groups mitigating after only 1 year of post-recession CO₂ rate. The CO₂ budget is commensurate with a 50% chance of avoiding 2°C. [Group 1: Australia, Poland, South Africa, Ukraine. Group 2: Brazil, Mexico, South Korea, Turkey. Group 3: Canada. Group 4: China, Hong Kong, Taiwan. Group 5: France, Germany, Italy, Spain, UK; Group 6: India. Group 7: Indonesia, Iran, Kazakhstan, Saudi Arabia, Thailand. Group 8: Japan. Group 9: Russia. Group 10: US.]